

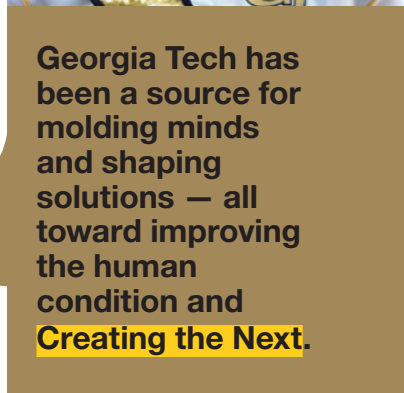
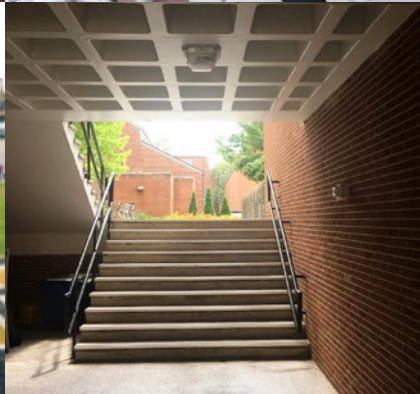
**Georgia  
Tech**   
CREATING THE NEXT





SINCE

# 1885







# #7

Georgia Tech attracts a record number of applicants each year thanks to our reputation for a technologically based education combined with hands-on learning experiences.



SUSTAINED TOP-10 PUBLIC UNIVERSITY RANKING BY *U.S. NEWS & WORLD REPORT* FOR THE PAST 17 YEARS.



## 40%

OF UNDERGRADS PARTICIPATE IN RESEARCH



**ZOHA NAQAWA**, a member of the Society of Women in Physics, has been a part of the Complex Heart Arrhythmias and other Oscillating Systems (CHAOS) Lab for a year. She teases **MICHAEL BARNHILL** that he doesn't know how to solder — "I work with sea monkeys," he replies.



## \$70,500

AVERAGE STARTING SALARY FOR GRADUATES



**52% OF**  
**UNDERGRADUATES HAVE**  
**AN INTERNATIONAL**  
**EXPERIENCE**



College should not only be about a four-year experience. It should actually be solid preparation for the 40 years beyond.

And that's why Georgia Tech!

4 < 40



### UNDERGRADUATE RESEARCH OPPORTUNITIES PROGRAM (UROP)

You'll find many opportunities to participate in **research with faculty** across campus. UROP will help you find the position that best aligns with your goals.

### CREATE-X

A faculty-led initiative that provides you with the tools to **pursue your entrepreneurial goals**. CREATE-X has generated more than 70 student startups since its inception in 2014.

### SERVE-LEARN-SUSTAIN

This campuswide initiative allows you to play an active role in advancing Tech's motto of Progress and Service by promoting **sustainable communities**.

### CO-OP EDUCATION

The co-op experience allows you to use your disciplinary knowledge **on the job**, reinforcing your classroom learning while empowering you to make meaningful workplace contributions.



*Sara Beagle earned her bachelor's degree in Business Administration with a concentration in Finance. While at Scheller College, Sara interned at The Coca-Cola Company, Siemens, and SunTrust Robinson Humphrey, which hired her as an investment banking analyst following her graduation.*



More than 700 businesses, industries, and organizations throughout the U.S. and abroad employ Georgia Tech co-op students and interns each year. As an intern at Eaton in Peachtree City, Georgia, aerospace engineering major **ZIVAN BHOLAI** is responsible for designing lighting fixtures for commercial buildings.





As you walk across our tree-lined, 400-acre campus, you almost forget you're one of the nearly 6 million populating the nation's ninth largest metro area.

Nestled in the heart of Atlanta's Midtown, Georgia Tech gives you a sprawling traditional campus setting on the edge of a city bursting with all the opportunities you could ever want.

# 5,884,736

*Ranked 10th economically in the nation with a GDP of \$276 billion,\* Atlanta is home to 26 company headquarters that are among the 2018 FORTUNE 1000; 15 of those are also ranked in the 2018 FORTUNE 500.\*\**

For 10 consecutive years, Georgia Tech has received Tree Campus USA recognition for its commitment to effective urban forest management.



The **CLOUGH UNDERGRADUATE LEARNING COMMONS** is an iconic example of environmental sustainability in Atlanta. One of its most popular features is the Green Roof Garden, which covers 50 percent of the building's roof, helping to improve cooling efficiency and minimize the heat island effect.

*An 80-foot-tall stainless steel sculpture in front of the Wenn Student Center, the Kessler Campanile is used as part of the Georgia Tech logo, representing an artistic blend of tradition and technology.*



You'll find that with an undergraduate student body of

# fifteen thousand

there's a wide assortment of passions to be pursued. Tech's Atlanta location allows you to pursue yours in the context of one of America's best cities.



## ATLANTA BELTLINE

A network of public parks, multi-use trails, and multiple transit options that began as **the master's thesis** of a Tech Ph.D. student.

## FOX THEATRE

A historic venue for live entertainment, including the Broadway hit, *Hamilton*.

## GEORGIA AQUARIUM

**World's largest aquarium** contributing to the understanding of the marine world through work that combines field research with the study of onsite animals in a controlled environment.

## MERCEDES-BENZ STADIUM

One of the world's finest **sports and entertainment facilities** with several Tech connections including 1979 alumnus Tommy Holder, CEO of Holder Construction, which helped build the \$1.5 billion stadium.

## PIEDMONT PARK

**Over 200 acres** offering the perfect setting for a wide variety of activities ranging from festivals to fitness classes.

## TECH SQUARE

Eight blocks in Midtown Atlanta affording the convenience of a dynamic concentration of **startups, business incubators and accelerators, and corporate giants** such as AT&T, NCR, and Delta Air Lines.



Atlanta Streets Alive is a festival that closes streets to cars so cyclists and pedestrians – like **INIKA JAIN, MADISON SMITH, KIRTAN PAREKH,** and **GRACE TRIMPE** – can get together for food, fun, and stories about study abroad adventures: Inika swam with sharks!





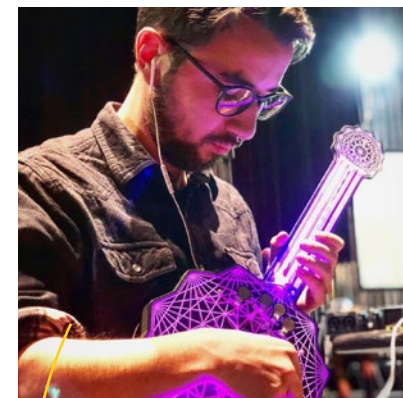
One of Tech's newest multipurpose facilities is nestled among the residence halls of West Campus. The **WEST VILLAGE DINING COMMONS** offers 24/7 BuzzCard access, with dining options available from 7 a.m. to 2 a.m. most days.

## THE CENTER FOR ACADEMIC SUCCESS (CAS)

CAS provides comprehensive support options that include initiatives such as 1-to-1 Tutoring and Peer-Led Undergraduate Study (PLUS).

## INVENTURE PRIZE

This Emmy Award-winning invention competition provides a forum for students from all academic backgrounds across campus to showcase their innovations. Apart from the grand prize of \$20,000, competitors vie for a free U.S. patent filing.



## OFFICE OF THE ARTS

You will find artistic enterprises — including music, drama, dance, poetry performances, and visual art exhibitions — woven into Tech's scientific and technological research and academics.

*Each year, Georgia Tech's Margaret Guthman New Musical Instrument Competition serves as a showcase for the best new ideas in musicality, design, and engineering.*

**900** STUDENTS WILL HAVE JOINED A LIVING LEARNING COMMUNITY BY FALL 2018.

**97%**

**At Tech, we're proud to claim that 97 percent is our first-year retention rate.**

**How do we do it? We are focused on helping you thrive as a student, graduate, and lifelong learner.**

## LIVING LEARNING COMMUNITIES

Integrated experiences that promote interactions between faculty and students, improve GPA, increase retention, and ease both the academic and social transition to college.

- GLOBAL LEADERSHIP
- GRAND CHALLENGES
- HONORS PROGRAM
- SCIENCE AND MATH RESEARCH TRAINING (SMART)

- SCIENCE, HEALTH, AND RELATED PROFESSIONS (SHARP)
- IGNITE (SUMMER PROGRAM)
- INTERNATIONAL HOUSE\*
- WOMEN, SOCIETY, AND TECHNOLOGY\*

\*Open only to students in their second year and beyond.



MAJORS

## SCHELLER COLLEGE OF BUSINESS

Business Administration

## COLLEGE OF COMPUTING

Computer Science

## COLLEGE OF DESIGN

Architecture

Industrial Design

Music Technology

## COLLEGE OF ENGINEERING

Aerospace Engineering

Biomedical Engineering

Chemical and Biomolecular Engineering

Civil Engineering

Computer Engineering

Electrical Engineering

Environmental Engineering

Industrial Engineering

Materials Science and Engineering

Mechanical Engineering

Nuclear and Radiological Engineering

## IVAN ALLEN COLLEGE OF LIBERAL ARTS

Applied Languages and Intercultural Studies

Computational Media

Economics

Economics and International Affairs

Global Economics and Modern Languages

History, Technology, and Society

International Affairs

International Affairs and Modern Languages

Literature, Media, and Communication

Public Policy

## COLLEGE OF SCIENCES

Applied Physics

Biochemistry

Biology

Chemistry

Earth and Atmospheric Sciences

Mathematics

Neuroscience

Physics

Psychology

## PREPROFESSIONAL PROGRAMS

Pre-Health

Pre-Law

Pre-Teaching

64 minors

Ready to Create the Next at Georgia Tech?

# apply today!

## 2018 FIRST-YEAR STUDENT PROFILE

from **1,508** high schools

**316** in Georgia

**31%**

Asian

**7%**

Black

**46%**

White

**9%**

Hispanic

**4%**

Multiracial

**2%**

Unknown

**60%**

Male

**40%**

Female

from **78** countries

and **45** states

Percentages do not add to 100% due to rounding.

\*8.31% of students identify one of their races as Black (includes Multiracial).

## 2018 FIRST-YEAR CLASS STATS

**35,613**

applications

ADMIT RATE

**37%**

from Georgia

**19%**

from elsewhere

ACADEMIC MID-50% RANGE

**1400-1520**

SAT

**31-34**

ACT

**A**

GPA average

## FIRST-YEAR COST OF ATTENDANCE (2018-19)

TUITION AND FEES

**\$12,424**

Georgia residents

**\$33,020**

non-Georgia residents

ESTIMATED ANNUAL TOTALS  
(housing, meals, etc.)

**\$28,368**

Georgia residents

**\$48,964**

non-Georgia residents

## IMPORTANT DEADLINES

**October 15**

Early Action

**January 1**

Regular Decision

## RESOURCES

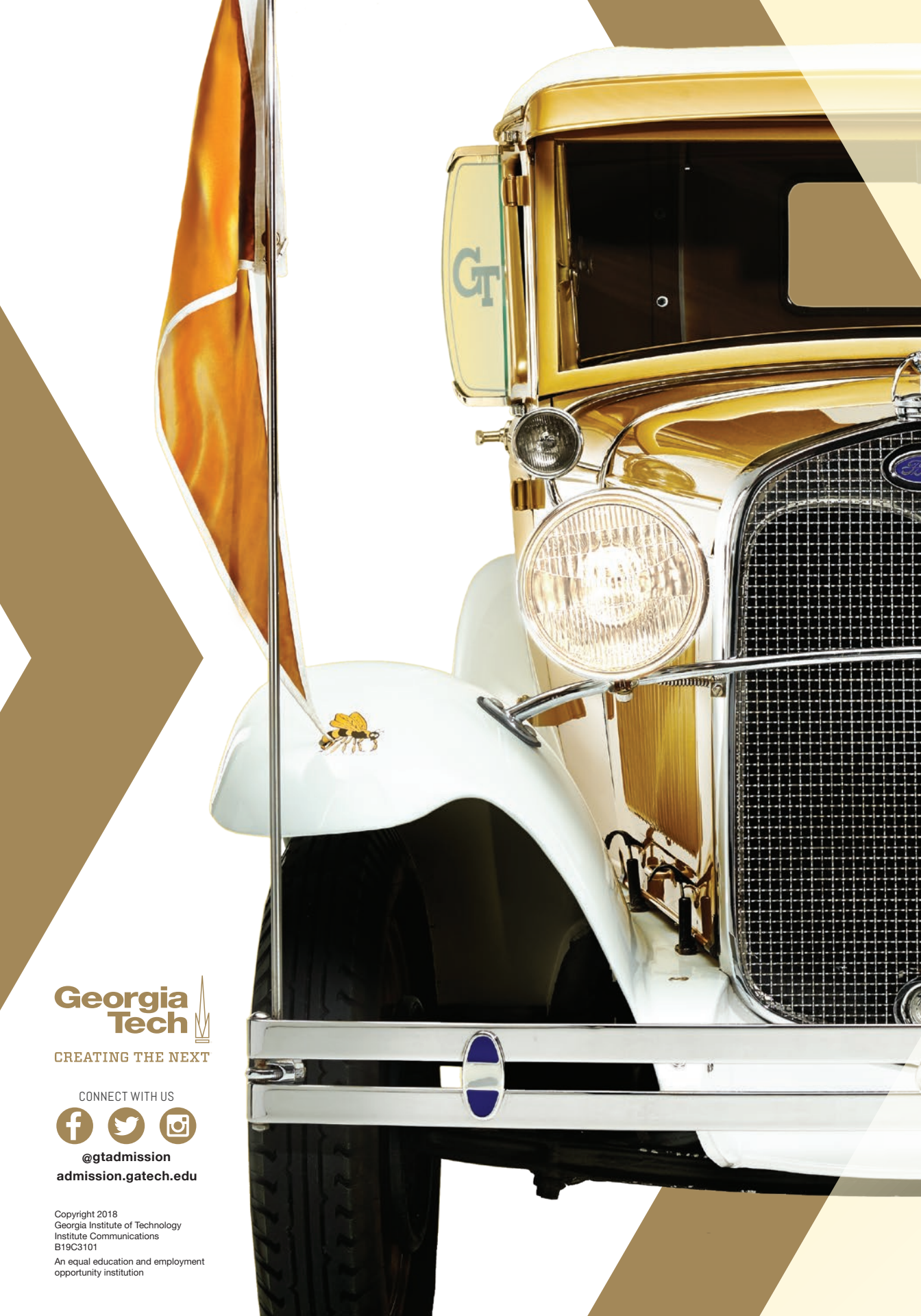
» **Our Blog** [admission.gatech.edu/blog](https://admission.gatech.edu/blog)

» **How to Apply** [admission.gatech.edu/first-year](https://admission.gatech.edu/first-year)

» **Your Application Review** [admission.gatech.edu/process](https://admission.gatech.edu/process)

» **Financial Aid** [finaid.gatech.edu](https://finaid.gatech.edu)





CREATING THE NEXT

CONNECT WITH US



@gtadmission  
admission.gatech.edu

Copyright 2018  
Georgia Institute of Technology  
Institute Communications  
B19C3101  
An equal education and employment  
opportunity institution