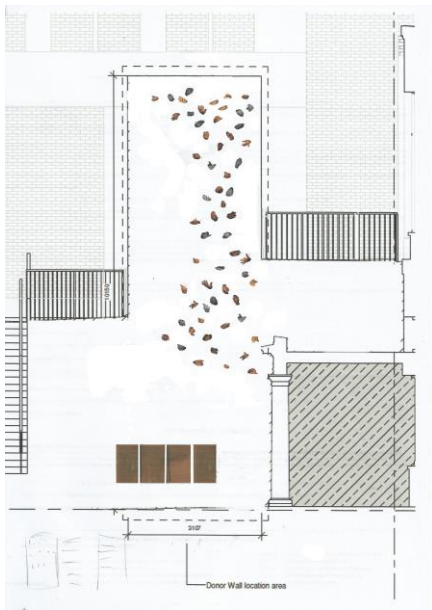
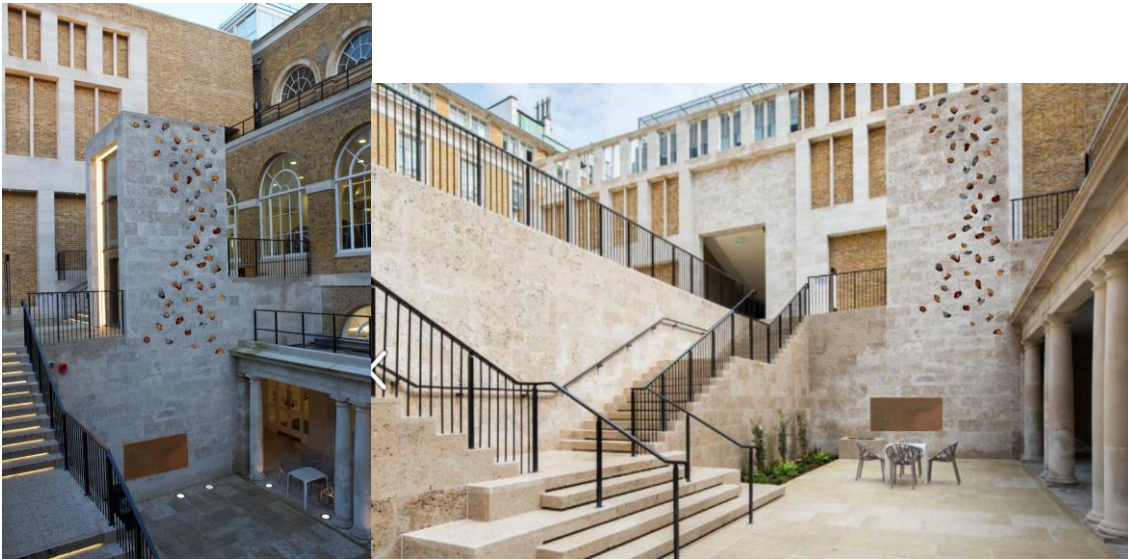
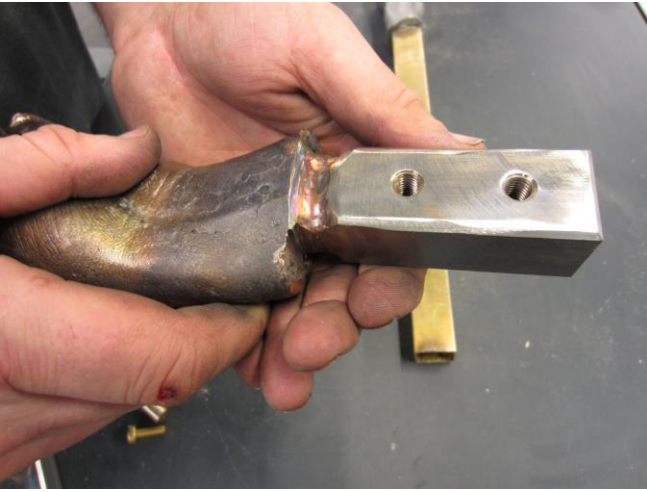


Concept Images



Process and Casting Images





Above: hinged stem to meet health and safety requirements (so that stem would collapse should a student manage to climb it)

Below: wax hands ceramic mould





Above and below: wax hands spruing



Above: UCL scholarship recipient having hand case as representative of major UK Trust and Foundation

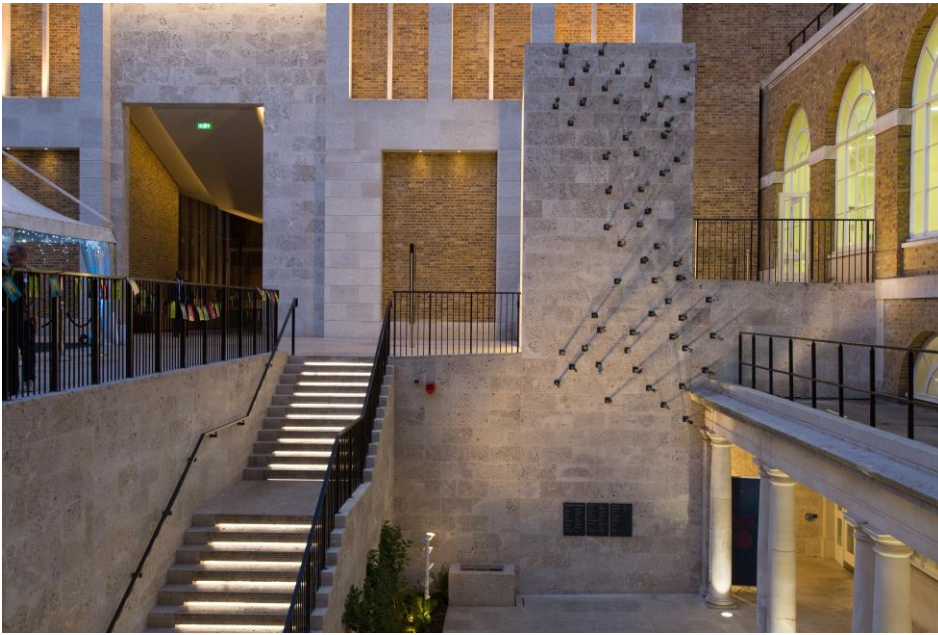


Above: mobile casting carried out in New York City for international donor

Below: Hong Kong alumna and donor, and husband, casting hands on trip to UK – PHOTO NOT APPROVED FOR EXTERNAL USE



Final Images (including celebration event)







Above: Our oldest castee