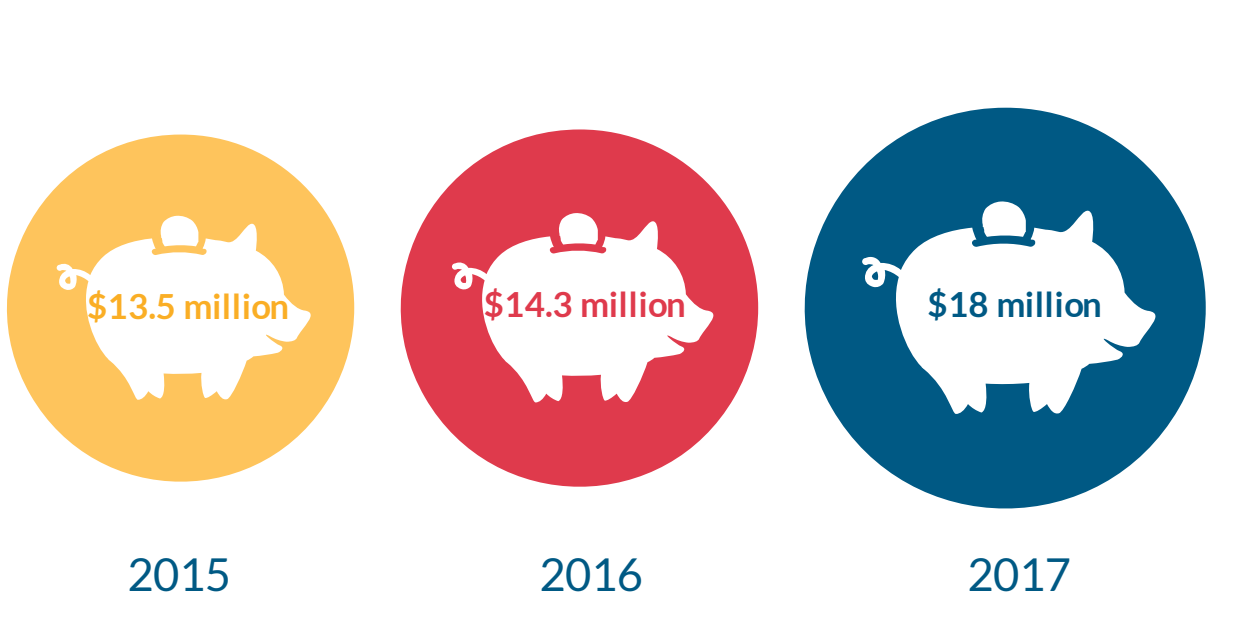
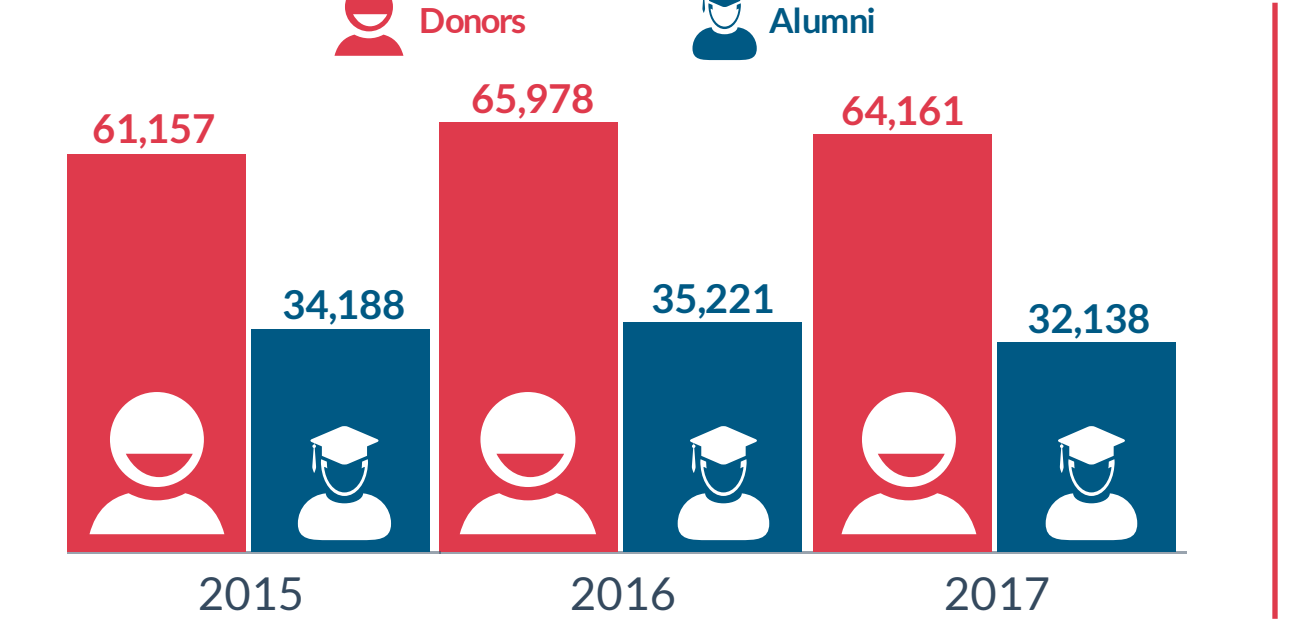
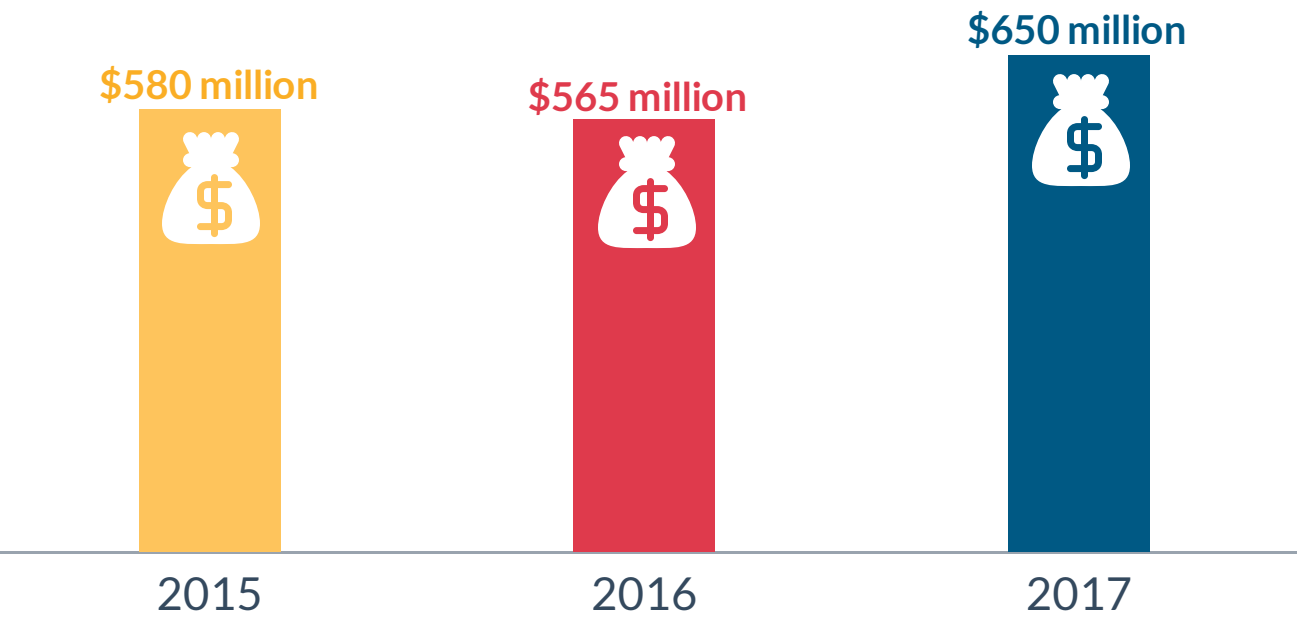


TRENDS IN PHILANTHROPIC SUPPORT FOR HIGHER EDUCATION IN AUSTRALIA AND NEW ZEALAND

Total new funds secured (\$AUD)

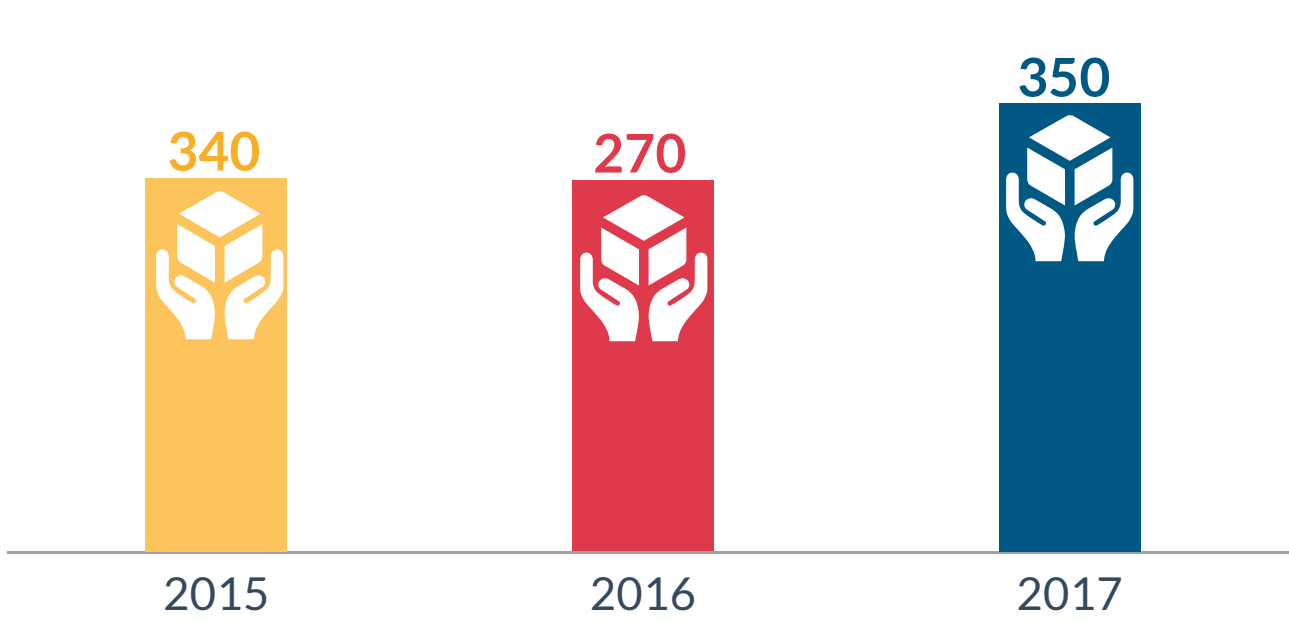
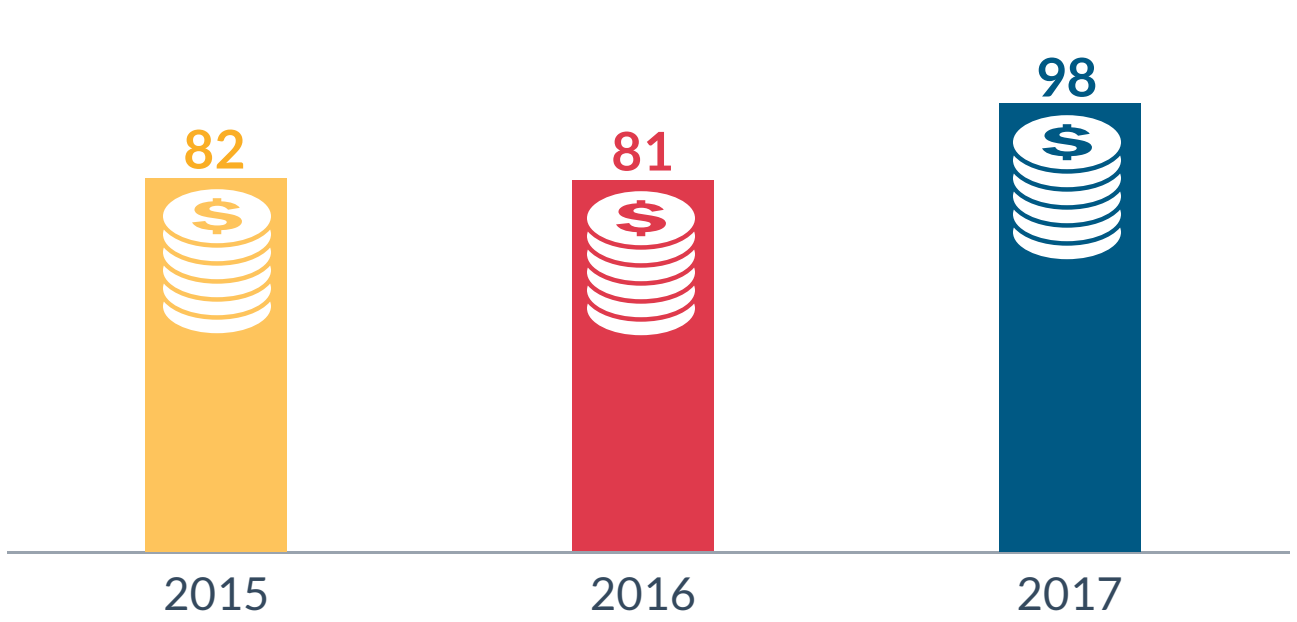
Number of donors

Annual fund secured (\$AUD)



Number of confirmed pledges of \$1m or more

Number of confirmed bequest intentions



Charitable Giving to Universities in Australia and New Zealand 2018

This infographic presents findings from the 2018 Survey of Charitable Giving to Universities in Australia and New Zealand.

The report provides an insight into the scale and trends of philanthropy within the higher education sector and is a key source of information on this subject for Australia and New Zealand. Twenty four Australian institutions took part in the survey and one from New Zealand. The data reported covered 2015 to 2017.