



PLANNING GUIDE

# Kylemore Abbey Global Centre



UNIVERSITY OF  
NOTRE DAME

INTERNATIONAL

# Welcome



Notre Dame International's mission at Kylemore is to create a *vibrant intellectual and spiritual* center. The Kylemore Abbey Global Centre works with the Dublin Global Gateway to dynamically broaden Notre Dame's engagement within Ireland and to foster international connectivity, serving as a conduit between campus and the wider European and American university network.

We welcome groups from Notre Dame, external organizations, and the local community for events, conferences, lectures, and retreats.

# Learning Space

## FACILITIES

The Kylemore Abbey Global Centre features a large classroom that is technologically equipped to the highest standard with high-speed WiFi, Crestron Air Media, a large projection screen, a flat-screen television for presentations, and a copier/scanner/printer. The classroom seats up

to 50 people and features a soundproof barrier which can be used to divide the space into two separate classrooms, each with a capacity of 25 people. Kylemore offers a variety of layout options to facilitate lectures, roundtable discussions, meetings, and group work.



# Social Space

## FACILITIES

The Centre boasts a unique event space on the top floor, which features 14-foot glass panels through which visitors are treated to breathtaking panoramic views of the Connemara Countryside. This space is available for conferences or banquets of up to 100 people.

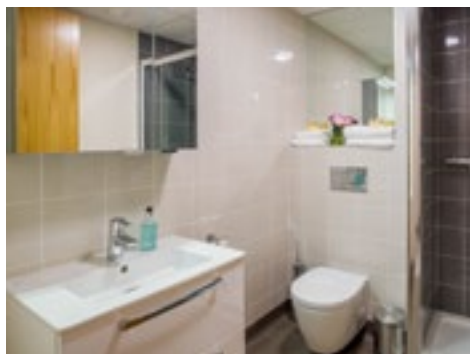


# Accommodations

## FACILITIES

The Kylemore Abbey Global Centre is located in the historic St. Joseph's Hall, a wing adjacent to the main castle. It features 16 bedrooms, which can house students and/or professionals. A variety of bedroom combinations makes use of the ingenuity of space. Bedrooms can

accommodate single, double, triple, and quad occupancy depending on the program need. The Centre is fully wheelchair accessible. Bedrooms are en suite with full wireless connectivity, and residents access their bedrooms and the building using electronic swipe cards.



# Booking

**Applications** must be made at least six months in advance of the program date. Proposals will be subject to review based on the following criteria: type of event, budget, duration of use, the number of participants, and participating faculty/staff-to-student ratio.

**Undergraduate and graduate programs** are encouraged as are professional or academic conferences. Applications from outside of Notre Dame are accepted. Classroom and conference facilities must be pre-booked, and all office requirements and supplies should be considered when budgeting for a program. Welcome packets are included in the classroom material. Meal requirements must be submitted at the time of booking.

**Meals at the Centre:** A private chef is on site to tailor meal plans to accommodate the times and functions of the program and the dietary needs of the participants. Using locally sourced products, the meals showcase the high quality of Irish production.

**To submit a proposal for a conference or event, please visit [kylemore.nd.edu](http://kylemore.nd.edu). Submissions for proposed programming should be made at least six months in advance of the start date.**

A domestic kitchen is also available for light refreshments and snacks outside of normal scheduling. Optional services are available for an additional fee, including wine and full bar service. Full catering capabilities for receptions up to 100 people.

**Audio/visual:** Kylemore is fully equipped to campus standards with AV, projection, high-speed internet, and WiFi throughout. If additional AV is required, local companies can be consulted upon request at an additional cost.



# Cultural Activities

The Kylemore Abbey Global Centre is situated along the idyllic Wild Atlantic Way, Ireland's largest coastal touring route. Connemara, in County Galway, is considered the cultural heart of Ireland and has no shortage of artists, musicians, and Irish language opportunities.

## These unique activities may be booked:

- Island tours: Aran Islands, Inishbofin, Claire Island, Omey Island Races
- Sheep and dog farms, Diamond Hill hike, famine walks
- Pilgrimages: Mamean, Croagh Patrick, Ballintubber Abbey, Knock Shrine
- Day trip to Cliffs of Moher and the Burren
- Golf at Connemara Links
- Local food experiences: oyster farm, Killary Mussels, Connemara Smokehouse
- Killary boat cruises, bog challenges, Greenway bike rides, Connemara pony trekking, sailing

*The community at Kylemore prays three times each day in the Benedictine chapel adjacent to the visitors' center: Lauds at 7:30 a.m., Mass at 12:15 p.m., and Vespers at 6:00 p.m. All are welcome.*



# Location



Kylemore Abbey is located in Connemara, Co. Galway, West of Ireland. Situated on the N59 between Clifden and Westport, it is easily accessible from Shannon, Galway City, Clifden, Cong, and Westport.

**Ground transport:** Tour coaches and private cars are available to bring participants to and from Kylemore. The Centre staff can recommend local companies.

Regional bus lines service Kylemore and the nearby towns of Clifden and Letterfrack.

## DIRECTIONS

### From Dublin Airport and city center

Express buses are available from Dublin to Galway City, departing from the city center as well as Dublin Airport. Hourly services are operated by GoBus and CityLink. Rail service between Dublin and Galway City is also available from Irish Rail.

**Drive time:** 3.5 hours

### From Shannon Airport

Bus Éireann offers regular service from Shannon Airport to Galway City, on Route 51.

**Drive time:** 2 hours

### From Galway City

Two bus services are available to bring guests on the Galway-Clifden route to Connemara: Bus Éireann Routes 419 and 412, and the Citylink Galway-Clifden service. Guests can take the bus to Clifden or Letterfrack, where they can take a taxi to Kylemore Abbey.

**Drive time:** 1.5 hours



# Contact



Lisa M. Caulfield  
Academic Director

A first-generation Canadian born in Toronto, Lisa moved to Ireland in 2003. She graduated from the University of Toronto after completing an Honors B.A. in English and history. She has a finance background and has completed an M.A. in modern Irish literature from the National University (Maynooth, County Kildare). Her academic interest focuses upon the role of the mythic hero in Irish literature, drama, art, and poetry. Lisa has worked for Notre Dame International since 2004 and has been leading the international efforts in the west of Ireland since 2015. Lisa works across the colleges/schools and with organizations to create appropriate programs.

[kylemore@nd.edu](mailto:kylemore@nd.edu)

**Kylemore Abbey Global Centre**

Notre Dame International  
Kylemore Abbey  
Connemara, Co. Galway, Ireland  
H91 VR90

[kylemore.nd.edu](http://kylemore.nd.edu)

353-(0)9541815

[kylemore@nd.edu](mailto:kylemore@nd.edu)



UNIVERSITY OF  
NOTRE DAME

INTERNATIONAL