

# Trends in philanthropic support for higher education

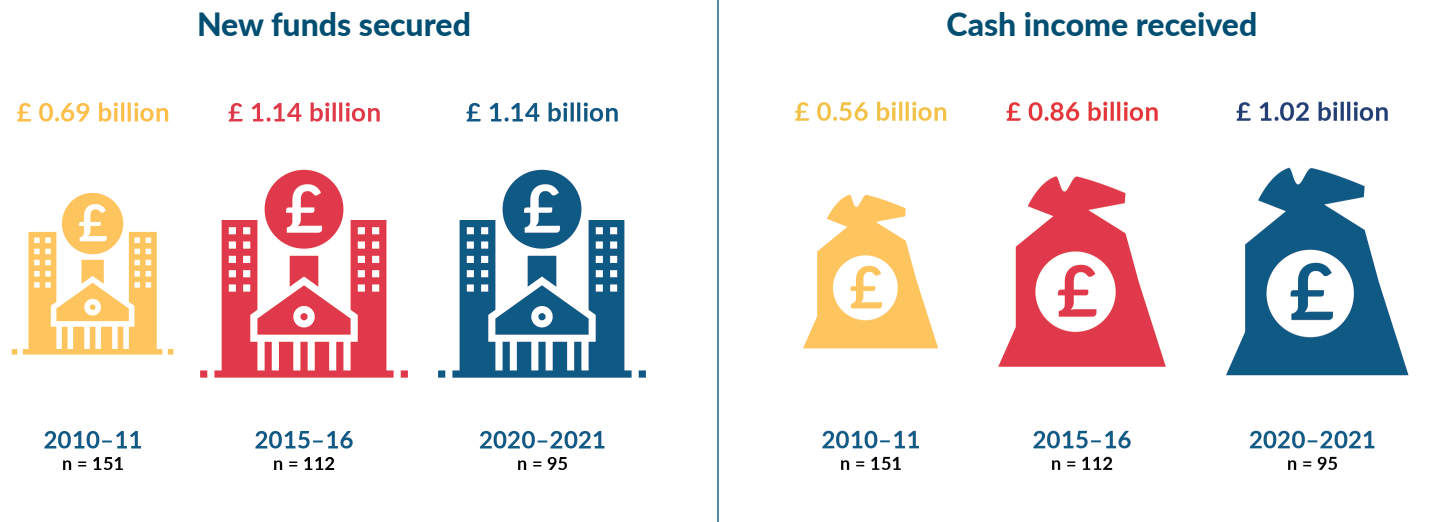
## CASE-Ross Support of Education, 2022

Generating Philanthropic Support for Higher Education, United Kingdom and Ireland

The CASE-Ross Survey is annually conducted by the Council for Advancement and Support of Education (CASE). It provides an estimate of the overall state of philanthropic giving to the higher education sector and is a key source of information on the subject in the United Kingdom and Republic of Ireland.

To download the full CASE-Ross 2022 report please visit [www.case.org/CASE-Ross](http://www.case.org/CASE-Ross)

For any further information please contact Divya Krishnaswamy at [dkrishnaswamy@case.org](mailto:dkrishnaswamy@case.org)



### Total number of institutions that secured new funds at different income levels 2020-2021

