

Undergraduate Viewbook

# Biola University



# Table of Contents

**02** INTRODUCTION

**04** ACADEMICS

**05** TORREY HONORS INSTITUTE

**06** STEM PROGRAMS

**08** SPIRITUAL LIFE

**09** BIBLE MINOR

**10** MAJORS & MINORS

**12** SCHOOL OF SCIENCE, TECHNOLOGY AND HEALTH

**14** SCHOOL OF HUMANITIES AND SOCIAL SCIENCES

**15** SCHOOL OF EDUCATION

**16** SCHOOL OF FINE ARTS AND COMMUNICATION

**17** TALBOT SCHOOL OF THEOLOGY

**18** CROWELL SCHOOL OF BUSINESS

**20** COOK SCHOOL OF INTERCULTURAL STUDIES

**21** ROSEMEAD SCHOOL OF PSYCHOLOGY

**22** LOCATION

**23** STUDY ABROAD

**24** STUDENT LIFE

**25** CLUBS, INTRAMURAL AND CLUB SPORTS

**26** RESIDENCE LIFE

**28** ATHLETICS

**30** OUTCOMES

**31** FINANCIAL AID AND SUPPORT SERVICES

**32** ADMISSIONS

**33** VISIT



Above All Give  
Glory to God

Imago Dei



Est. 1908

BIOLA  
EAGLES



We are restless.

The world is full of things to know.

Stories to tell, mysteries to solve,  
ideas to think and words to read.

People to meet and help and heal,  
prayers to pray and sunrises to see.

We are restless.

Because there are things to do.

Individually,

we are incomplete,  
inexperienced,  
imperfect.

# We are restless.

But together—

together, we are a foundation for each other.

Upon which each of us can build our futures.

And be free to fall and fail and fumble  
and find our ways  
and succeed

over  
and over  
and over again—

because we support each other.

Lift each other up  
as we engage and impact the world.

“This is a good place to struggle,” we say.

As we seek out God in all things.

In the twisted ladder of a double helix.

In between the lines of literary masterpieces.

In the research we conduct.

And the conduits  
of the human mind.

In all that we do.

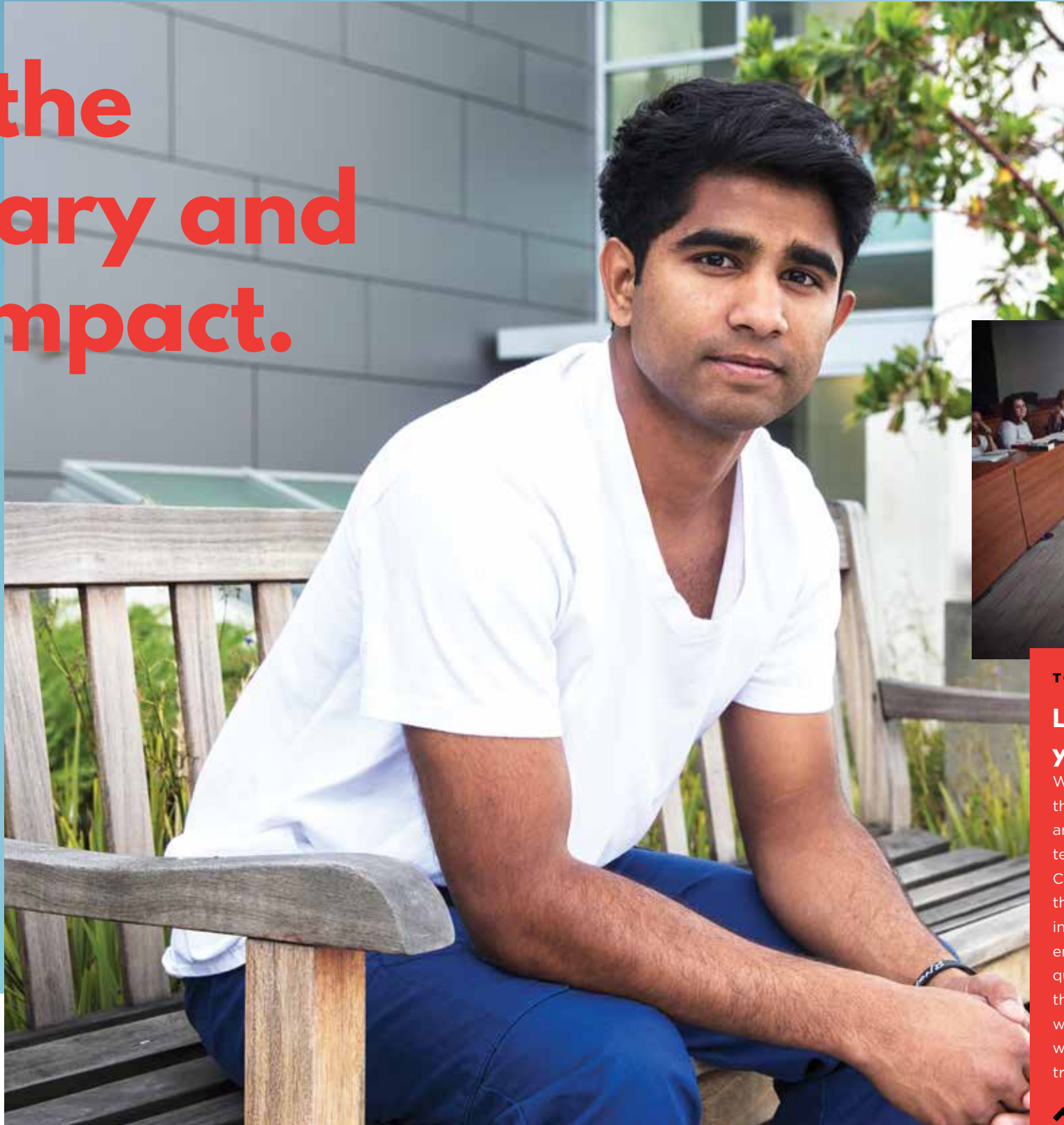
All that we are.

All that we become.

All as one.

# Attracting the extraordinary and radiating impact.

You can feel it. The pull of this place. It calls you. Draws in remarkable students from everywhere. And attracts exceptional faculty, too. Fulbright scholars, fellows, National Endowment for the Humanities grant recipients. Thought leaders who enjoy having the freedom to bring their faith to work every day—elevate it, incorporate it and wrestle with it—instead of leaving it at home. Here, Biola faculty can teach from their heads and their hearts. Just like you, on this campus they're truly free to be themselves. And because Biola has a low 15:1 student-to-faculty ratio, they also have the ability—and the desire—to take your education personally. Walk alongside you and help you find your way. Activate your passion and even open doors for you through their deep connections to leading graduate schools, professional internships and career opportunities.



## STUDENT SPOTLIGHT

She always wanted to attend a Christian university, so she came to Biola, where she knew she would be challenged greatly—academically and spiritually—as a Torrey Honors student. Right away, she found the challenge she was after, but she also found uncommon support. From her professors. From other students. And especially from her faculty mentor, who's invested in her growth every step of the way.

**Ashlyn Aulicino, '20**  
*Nursing, Torrey Honors Student*

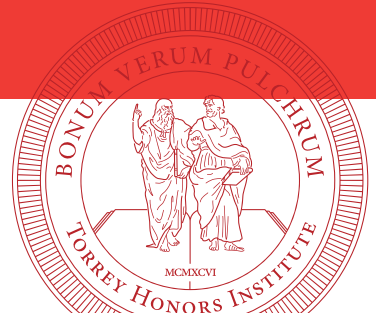


Nearly 85% of Biola faculty hold doctorates.

## TORREY HONORS INSTITUTE

### Let great literature shape you greatly.

We're going to be straight with you. This is one of the most intense honors programs anywhere. There are no textbooks. Instead, we just read the greatest texts ever written. By Plato, Shakespeare, Austen, C.S. Lewis and more than a hundred others. And then, together with our faculty mentors, we dig into the details—in and out of the classroom. We engage in hundreds of discussions. Ask the hardest questions and challenge each other as we seek the good, the true and the beautiful. Through it all, we become better equipped to go into the whole world—fearlessly—to light the way for others. With truth and grace. | [biola.edu/torrey](http://biola.edu/torrey)

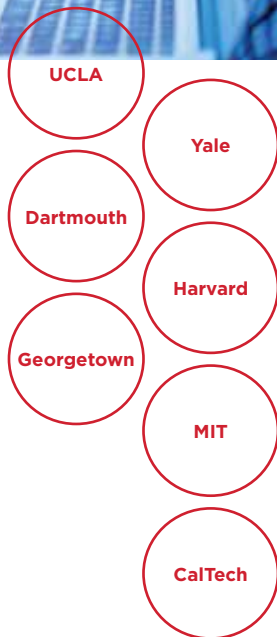




# What you didn't know

# you didn't know.

It may not look like it at first glance, but our peaceful campus is actually a testing ground. Behind all the clean, sturdy architecture and manicured gardens, brilliant faculty and students are at the forefront of ethical, innovative discovering and doing. Fostering new thinking daily by crushing conundrums and creating exciting collisions between faith and you-name-it, across 40 degrees and 80 concentrations, including a full range of science, technology, engineering and mathematics programs. Our powerful **STEM degrees**—everything from chemistry and computer science to engineering physics and kinesiology—will prepare you for some of the most in-demand careers of today—and tomorrow. Start exploring all of your options, right now, online. | [biola.edu/majors](http://biola.edu/majors)



Biola STEM graduates are accepted to the finest medical and graduate schools in the nation.



THE ALTON AND LYDIA LIM CENTER FOR SCIENCE, TECHNOLOGY AND HEALTH

## Where studying science and health becomes ministry.

Students entering Biola now will be among the first to take advantage of our new, 91,200-square-foot STEM facility. Complete with 27 labs, six classrooms and lots of cutting-edge technology, it was designed as a home for the next generation of amazing scientists, researchers, health professionals, engineers, mathematicians and technology developers seeking God's truth in their research and studies at Biola.



## FACULTY PROFILE

With a Ph.D. in nutritional science from Cornell, Dr. Varamini is an expert at unlocking human health mysteries. He can tell you precisely what habits help humans stay fit and flourish. And which behaviors cause our bodies to go on strike and stop working properly. But even as he imparts great science knowledge to the next generation of students, he lets them know that they should let the wisdom of our faith guide them, too. "The body is a gift from God. What do you think he would want you to do with it?" he says.

**Behzad Varamini**  
Associate Professor, Department of Biological Science

## UNEXPECTED OPTIONS

### Mighty degrees hidden in plain sight.

Haven't decided on a path yet? Maybe you just need to get off the main road and start exploring. Here are a few unique places to start.



**CINEMA AND MEDIA ARTS, B.A.**  
A national leader among Christian film schools. Get the instruction, mentorship, technical training and hands-on experience you need to become an exceptional visual storyteller.



**COMMUNICATION SCIENCES & DISORDERS, B.S.**  
Get the specialized knowledge and clinical training you'll need for graduate school and a career in the in-demand field of speech-language pathology.



**ENGINEERING PHYSICS, B.S.**  
Start here and finish at USC through our 3+2 partnership program. Learn to practically apply scientific knowledge to improve people's lives.



**MUSIC IN WORSHIP, B.S.**  
Focus on your musicianship, spiritual formation and biblical training and learn to lead music in worship in just about any environment.



**ANTHROPOLOGY, B.A.**  
This degree will cure your cultural nearsightedness and give you a broader understanding and appreciation of the values, languages and behaviors that have defined humans past and present.



**INTERDISCIPLINARY STUDIES, B.A.**  
Can't decide? Create your own. Mash two disciplines together. Organizational Management and English. Art History and Sociology. Political Science and Philosophy. You decide.



# Elevate



BU

your faith.

**100%** of students, faculty and staff are professing Christians.



## Who cares?

Why should you bother becoming academically and spiritually prepared? Because the world needs more wisdom, hope and grace—not less. More than ever, it needs bright minds like you to help carry our faith forward. That's why, while we fill our hungry minds with lessons about biology and statistical probabilities, psychology or theoretical approaches to the First Amendment, we also teach each other to develop a profound understanding of what matters most of all: Christ's presence and influence in the world.

And we do it seamlessly, by weaving our Christian perspective into everything we do—every class across every discipline. Through open discussions, we'll challenge each other to see what's unseen and find truth—in between the lines on the pages we read, in the research and experiments we do and the thoughts we think. Who cares if you become a Christian intellectual, ready to take on the world—academically, spiritually, in every way? We do. You do.

## BIBLE MINOR

### A major minor advantage.

In addition to being exceptionally prepared in their majors, each Biola student also takes the equivalent of 10 Bible and theology classes—enough for most to receive a minor in biblical studies. Every graduate leaves Biola sharp in mind, strong in character and biblically equipped for life.



**CHOOSE YOUR CHAPEL**  
Every student attends 20 amazing chapel experiences per semester.

- Accounting
- Anthropology  
*Applied Anthropology; Archaeology; General Anthropology; Linguistic Anthropology; Physical Anthropology; Socio-Cultural Anthropology*
- Applied Linguistics
- Applied Music
- Archaeology
- Art (Design)
- Art (Studio Art)  
*Design; Interdisciplinary; Painting; Photography; Sculpture*
- Biblical and Theological Studies  
*General Biblical and Theological Studies; Preaching and Pastoral Ministry*
- Biochemistry
- Biology (Biological Science)  
*General Biology; Premed, Pre-Health Care Professional*
- Biology (Biological Science: Secondary Instruction)
- Biology (Human Biology)  
*Pre-Chiropractic; Pre-Health Care Professional*
- Business Administration  
*Business Analytics; Financial Management; Financial Planning; International Business; Management; Marketing Application; Marketing Management*
- Chemistry
- Christian Ministries  
*Adult and Family; Children; Diversified; Youth*
- Cinema and Media Arts  
*Media Management; Production; Writing for Film and Television*
- Coaching
- Communication Sciences and Disorders
- Communication Studies  
*Dramatic Arts; Interdisciplinary Studies; Rhetorical/Interpersonal*
- Computer Science  
*Computer Science; Information Systems*
- Contemporary Worship Music
- ★ Education (Early Childhood Development Permits)
- Education (Elementary Education)
- Education (Liberal Studies, Elementary Education)  
*Biology; Early Childhood; English; Human Development; Intercultural Studies; Mathematics; Physical Education; Spanish; Special Education; U.S. History; Visual Arts*
- Education (Liberal Studies, Multidisciplinary)  
*Biology; Early Childhood; English; Human Development; Intercultural Studies; Mathematics; Physical Education; Spanish; Special Education; U.S. History; Visual Arts*
- Education (Secondary Education)
- ⊗ Education (Special Education)
- Education (Teacher Preparation Program)  
*Multiple Subject Credential; Single Subject Credential; Special Education Credential*
- Engineering Physics
- English  
*Literature; Secondary Instruction; Writing*
- Financial Planning
- Gender Studies
- History  
*Asian/African Civilization; Civilizations of the Americas; European Civilization; Secondary Instruction*
- Intercultural Studies  
*General Intercultural Studies; Interdisciplinary*
- Interdisciplinary Studies
- International Development
- International Relations
- Islamic Studies
- Journalism and Integrated Media  
*Broadcast; Cross-Cultural Media; Visual Media; Writing and Publishing*
- Kinesiology  
*Exercise Science and Health Promotion; Pre-Physical Therapy*
- Kinesiology, Health and Physical Education
- Mathematics  
*Actuarial Science; Applied Mathematics; Computer Science; Pure Mathematics; Secondary Instruction*
- Middle East Studies
- Missions
- Music  
*Commercial Music*
- Music Composition
- Music Education
- Music Performance  
*Instrumental; Organ; Piano; Voice*
- Music in Worship
- Nursing
- Philosophy  
*General Philosophy; Liberal Arts*
- Physical Science  
*General Physical Science; Secondary Instruction*
- Physics
- Political Science  
*General Political Science; Public Administration*
- Pre-Law
- Psychology
- Public Relations  
*Agency and Corporate PR; Entertainment and Events PR; Media Relations; Nonprofit and Ministry PR*
- Science and Theology
- Social Justice, Human Rights and Conflict Transformation
- Social Science  
*History; Political Science; Sociology*
- Social Work
- Sociology  
*Criminology; General Sociology; Social Work*
- Spanish  
*Generalist in Spanish; Professional Spanish; Secondary Instruction*
- Teaching English to Speakers of Other Languages
- Theatre
- ⊗ Torrey Honors Institute



# Become something

It's time. To push out to the edges of you—and then go even further. Learn to become greater than you were yesterday—every day. Smarter, wiser and more thoughtful. Patient, influential and closer to Christ than you ever thought possible. Choose a path and explore becoming that version of you that you always wanted to be. Contemplate a calling. Or, maybe, surprise yourself—take an unexpected path—and discover a whole new you. Either way, it's time. To take believing to the next level. Open your heart and let yourself be transformed by powerful, faith-infused academics, a supportive community of believers and God's boundless grace. | [biola.edu/majors](http://biola.edu/majors)

new.

● Major  
● Minor  
⊗ Certificate  
● Credential  
★ Permit





STUDENT SPOTLIGHT

*“Biola taught me that a good doctor understands the root of the problem and truly cares; it’s not just about diagnosis and treatment.”*

**Sam Hammer, '18**

*Biological Science - Pre-Dental, Dream Center Volunteer*

FACULTY PROFILE



Not surprisingly, her class was a little stumped when she asked them to consider computer programming as it relates to Genesis 1 & 2—the story of creation. But it wasn't long before her students began to draw parallels. Whether creating an app or all creation, you start with a blank slate. Computer code has bugs; humanity has sins. Then came the big discovery. They realized that one of the reasons humans are able to be creative and write programs at all is because we're created in the image of God—who is the ultimate Creator.

**Grace Lew**

*Associate Professor, Department of Math and Computer Science*



# Helping you make good health-career decisions.

Whether you're pre-med or pre-health, we know you're going to have questions and need support. Help with applications, MCAT prep courses or certifications? Our **Office of Health Professions Advising** is here for you. Interested in a local outreach project or doing a research internship in Indonesia? Let's talk. We'll even provide you with opportunities to interact with working professionals and graduate school reps throughout the year. | [biola.edu/ohpa](http://biola.edu/ohpa)

## School of Science, Technology and Health

The world needs more thoughtful, ethical science and health care professionals.

Curious, capable Christians equipped to incorporate their worldview into their careers and help humanity thrive. Committed to unlocking the mysteries of life. Ready to crack codes, innovate and take on technology. Embrace the principles of the natural world—and discover a vast common ground where our faith and science flourish together. | [biola.edu/science](http://biola.edu/science)

DEPARTMENT OF BIOLOGICAL SCIENCES • DEPARTMENT OF CHEMISTRY, PHYSICS AND ENGINEERING • DEPARTMENT OF COMMUNICATION SCIENCES AND DISORDERS • DEPARTMENT OF KINESIOLOGY AND HEALTH SCIENCE • DEPARTMENT OF MATH AND COMPUTER SCIENCE • DEPARTMENT OF NURSING



**OUR NEW, FAITH-INTEGRATED HEALTH AND SCIENCE CENTER.**

*In case you missed it, STEM and health sciences have a new, 91,200-square-foot home at Biola: The Alton and Lydia Lim Center for Science, Technology and Health.*







**FACULTY PROFILE**

Growing up in America, she didn't even realize how other Asian-Americans were being portrayed in film and television. Like most children, she simply continued to consume any media that Hollywood created, whether it was rife with stereotypes and underrepresented people of color, or not. But today, that's all changed. She's a notable scholar of race and ethnicity in film, television and new media. A teacher committed to showing students how to view media through a critical lens. And she's a vocal advocate for change—putting pressure on Hollywood to get with the program.

**Nancy Wang Yuen**  
Associate Professor of Sociology,  
Chair of Sociology



**B.A. IN SOCIOLOGY**

**Get a degree in seeking shalom.**

Life is beautiful and mysterious, unexpected and exciting. But sometimes it gets messy and complicated. When that happens, human flourishing stalls. That's why the world needs sociologists. People who know how to research and critically analyze the jumbled variables—crime, gender, race, ethnicity, religion, values—and make sense out of them. And find ways to bring back the shalom—the wholeness and health—so cities and systems can flow and people can thrive. | [biola.edu/sociology-ba](http://biola.edu/sociology-ba)



**SERVE HUMANITY**

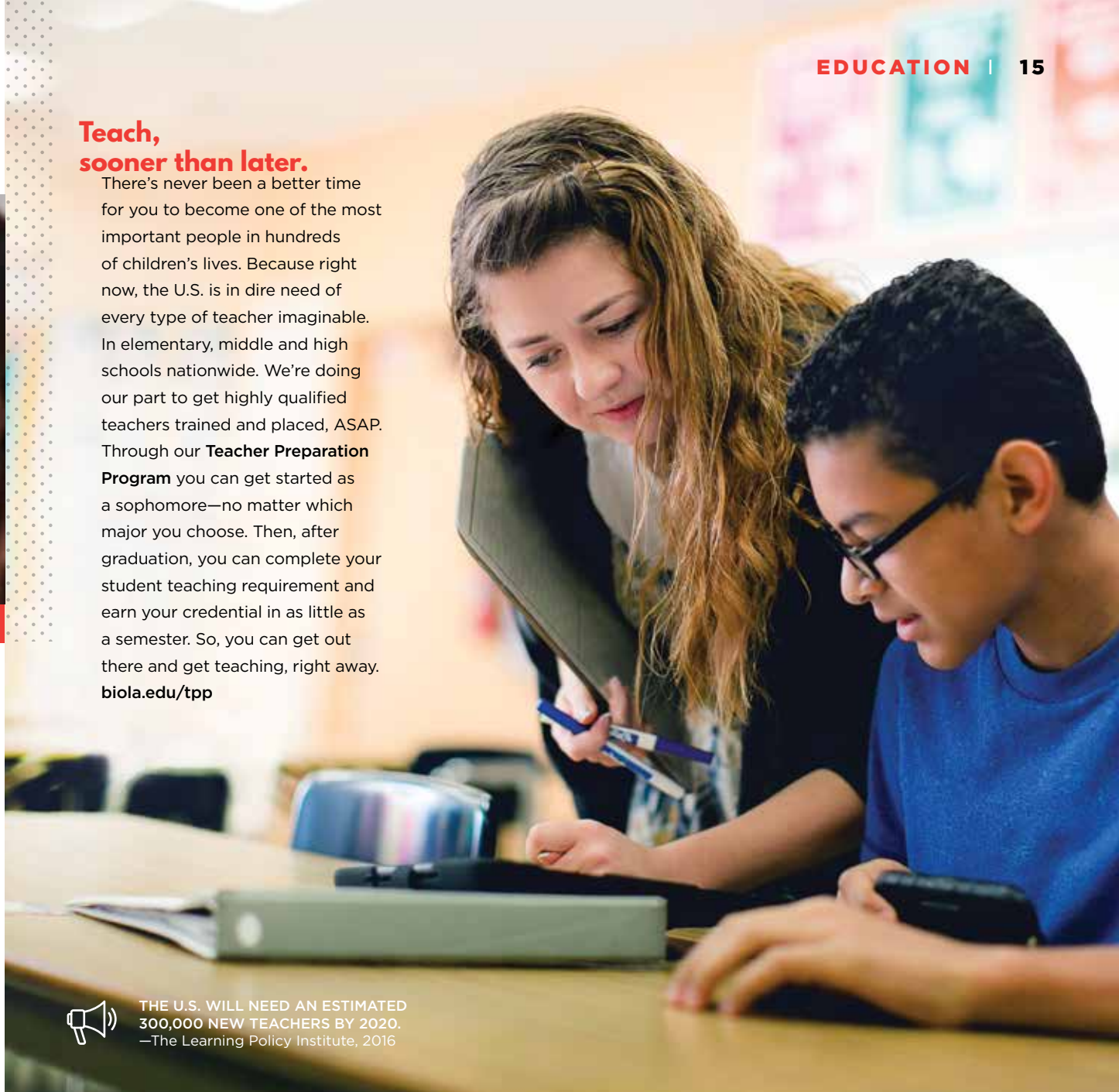
**BY LEARNING TO LEAD IT**

*America can always use a few more well-equipped Christians with the ethics and intelligence to help create and interpret laws and public policy. To promote justice and lead with humility. Are you ready? Political scientist or not, consider our American Studies Program. It serves as an experiential learning laboratory for students committed to connecting their faith to public affairs—in Washington, D.C.—where you can get hands-on experience, do original research and learn to light the way for humanity.*

**Teach, sooner than later.**

There's never been a better time for you to become one of the most important people in hundreds of children's lives. Because right now, the U.S. is in dire need of every type of teacher imaginable. In elementary, middle and high schools nationwide. We're doing our part to get highly qualified teachers trained and placed, ASAP. Through our **Teacher Preparation Program** you can get started as a sophomore—no matter which major you choose. Then, after graduation, you can complete your student teaching requirement and earn your credential in as little as a semester. So, you can get out there and get teaching, right away.

[biola.edu/tpp](http://biola.edu/tpp)



THE U.S. WILL NEED AN ESTIMATED 300,000 NEW TEACHERS BY 2020. —The Learning Policy Institute, 2016

# School of Humanities and Social Sciences

**This is where we discover, together, what it means to be human.**

We take a soul-searching look at humankind's similar and disparate systems, beliefs, languages and cultures. Seek great understanding through the literary masterpieces of great thinkers. Provide context for traditions and folklore and let philosophy collide with history and politics. This is where we make sense of the world. From a human perspective. And from a biblical perspective. | [biola.edu/humanities](http://biola.edu/humanities)

DEPARTMENT OF ENGLISH • DEPARTMENT OF HISTORY • DEPARTMENT OF MODERN LANGUAGES • DEPARTMENT OF PHILOSOPHY • DEPARTMENT OF POLITICAL SCIENCE • DEPARTMENT OF SOCIOLOGY • TORREY HONORS INSTITUTE



# School of Education

**We educate educators and administrators to make an impact wherever they go.**

Whether they're teaching in classrooms or supporting homeschooling, leading the way as principals or delivering important, life-changing knowledge to children and adults through schools and missions near or far away. We have a long history of turning students into influential educators. Advocates for Christ—ready, willing and able to go into the world and help people reach their full learning potential. | [biola.edu/education](http://biola.edu/education)



*Biola offers a single subject teaching credential that authorizes educators to teach a specific subject, such as English, math, music or physical education, at the middle- or high-school levels. Or you can get a multiple subject teaching credential that allows you to teach all subjects in an elementary school classroom.*





**Move hearts and minds with music.**

Fully accredited by the prestigious National Association of Schools of Music, our Conservatory of Music is teaching the next generation of music teachers, recording artists and performers.

**BRASS, WINDS AND PERCUSSION**

- COMMERCIAL MUSIC**
- COMPOSITION**
- KEYBOARD**
- MUSIC EDUCATION**
- MUSIC IN WORSHIP**
- STRINGS**
- VOICE**



**Want to know what the world thinks? Go to the movies.**

Few things take humanity's cultural temperature better than great movies. That's why our **Cinema and Media Arts** students go to the **Windrider Forum** at the **Sundance Film Festival** each year. They dig into art and film culture. Debate the importance of media literacy. Wrestle with current topics—like teen pregnancy and immigration—from a Christian perspective. And, yes, get exclusive access to some hot new filmmakers, too.

**TOP 50 BEST COLLEGES OFFERING DEGREES/MAJORS IN JOURNALISM: NATIONWIDE.**  
—College Factual, 2017



# School of Fine Arts and Communication

**Every discipline here is a channel through which we can impact the world and express our faith—with words, visuals and sound.**

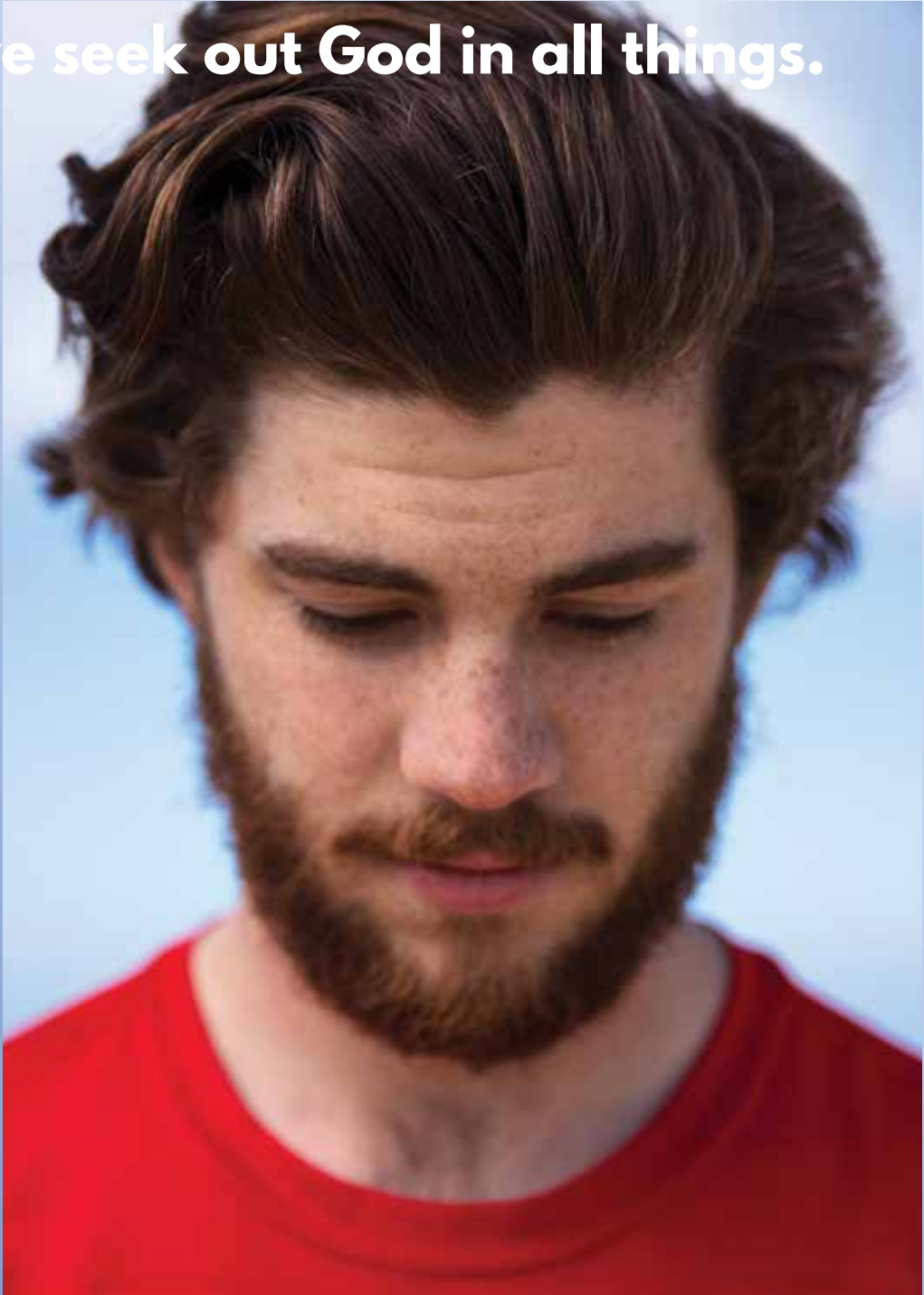
Music, Design and Studio Art. Cinema, Media Arts and Journalism. Even Public Relations and Production. They represent countless ways to create, tell and distribute stories. Through these programs, many of which are nationally ranked, we provide students with every opportunity to become proficient through practice and transform into powerful storytellers. | [biola.edu/fine-arts](http://biola.edu/fine-arts)

CONSERVATORY OF MUSIC • DEPARTMENT OF ART • DEPARTMENT OF CINEMA AND MEDIA ARTS • DEPARTMENT OF COMMUNICATION STUDIES • DEPARTMENT OF MEDIA, JOURNALISM AND PUBLIC RELATIONS

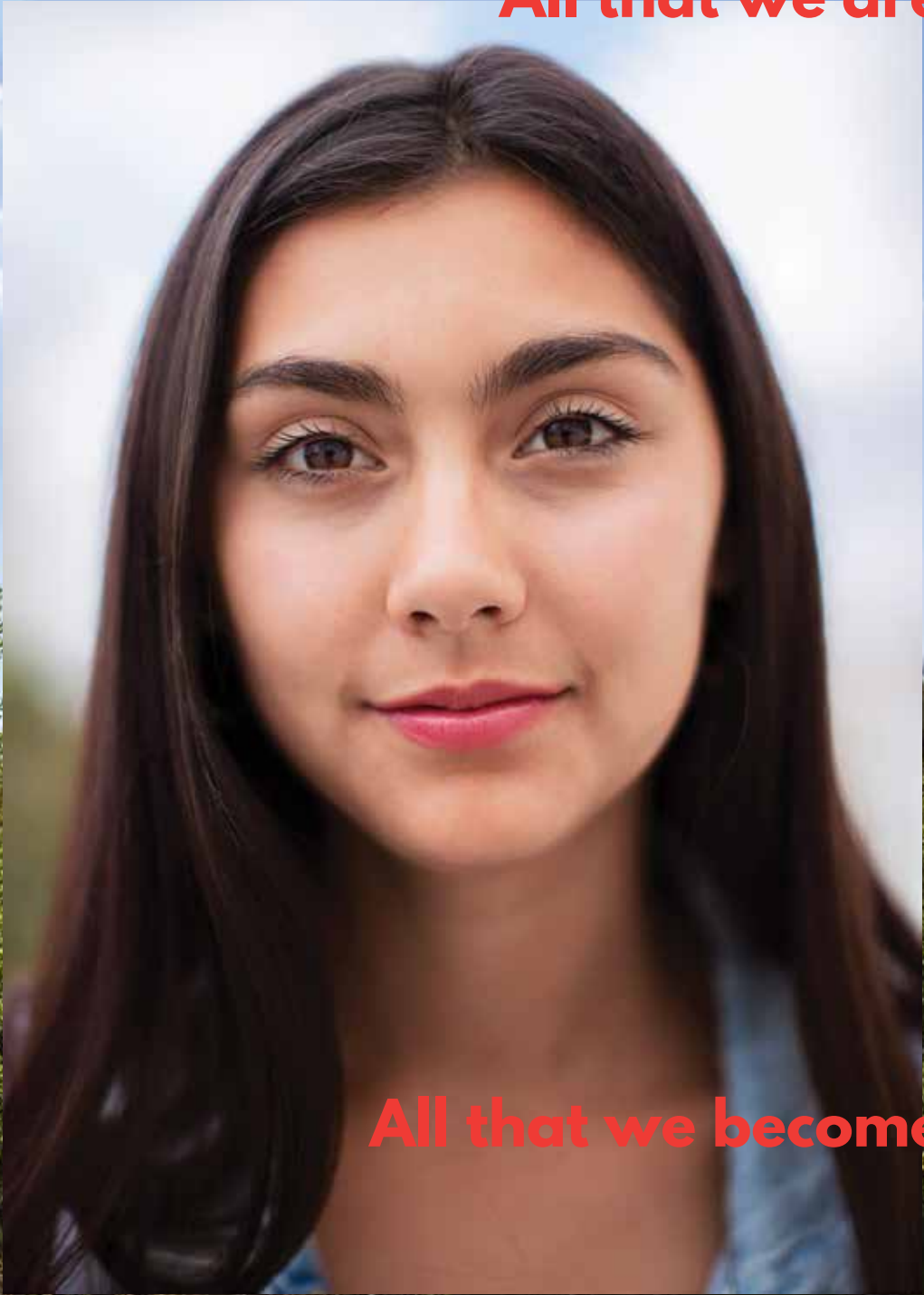




**As we seek out God in all things.**



**In all that we do.  
All that we are.**



**All that we become.**





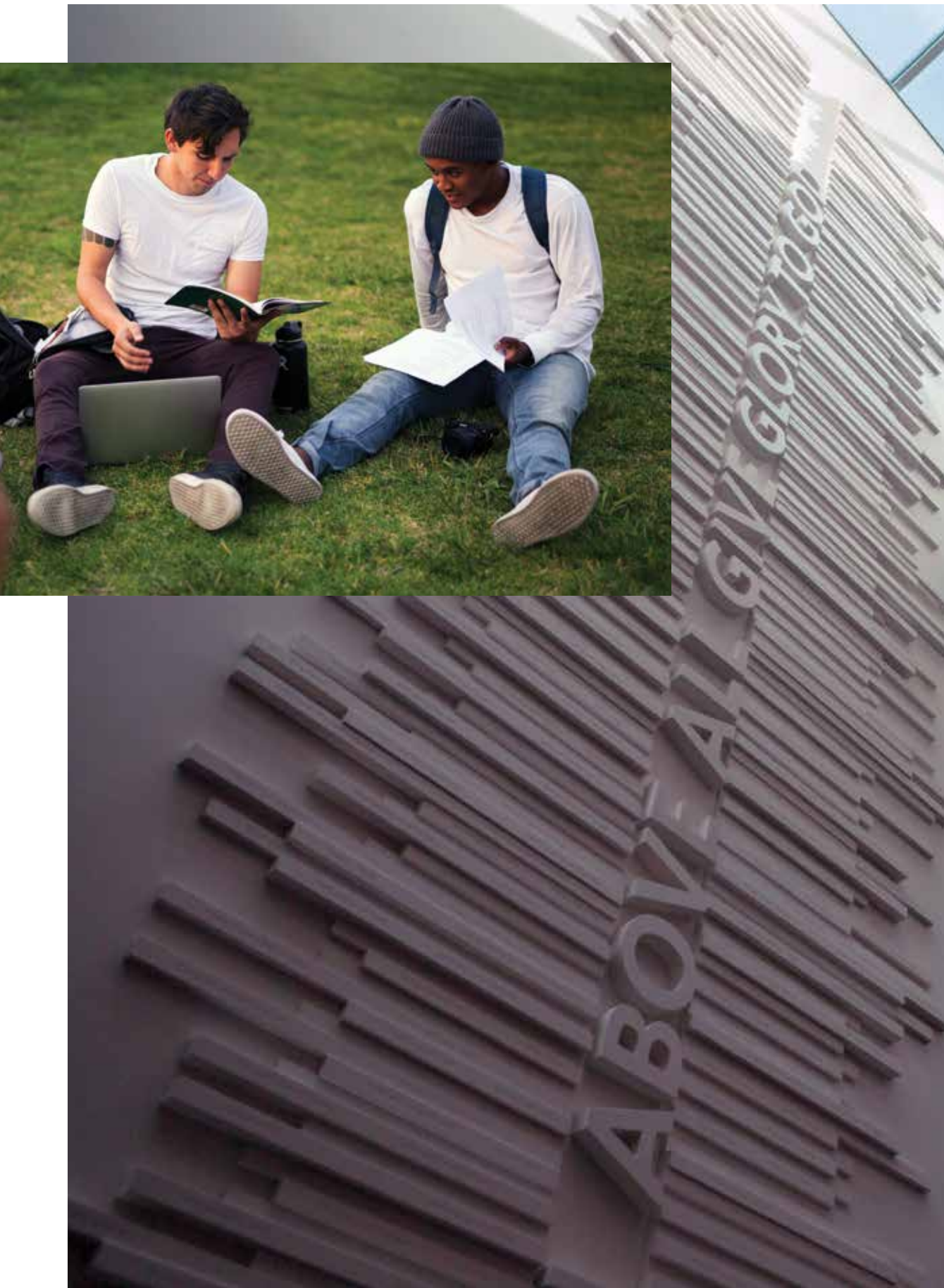
# ALL AS ONE



BIOLA UNIVERSITY

JOHN 1:20-23





#### B.A. + M.A. IN PREACHING AND PASTORAL MINISTRY

### Go beyond just lighting the way.

If it's your calling to go into the world to spread the Word, go into the world prepared. With your heart finely tuned and your mind comprehensively trained in Bible and theology. With your preaching and ministry skills fully intact. Enter into your life of ministry as a fully qualified servant-leader—with a bachelor's *and* a master's—in just five years, instead of six or even seven. If you're anxious to get out there engaging the world in the service of Christ a year sooner, all it takes is a little extra commitment early on. | [biola.edu/preaching](https://biola.edu/preaching)

#### FACULTY PROFILE

If you looked at him and thought, “I bet he played American football in Europe for three seasons, hitchhiked all over the U.S. and played ice hockey on his wedding night,” well, you’d be right. But he’s so much more than that. Dr. Thoennes is also an authoritative theologian. An expert on godly jealousy and the atonement of Christ. He’s a pastor at a local church. And fortunately, he’s a professor, here. Committed to teaching you how to think biblically about everything. To condition your heart and mind to see the truth—and prepare you to carry it forward.

#### **Erik Thoennes**

*Professor, Biblical & Theological Studies  
Chair, Biblical & Theological  
Studies Department*



## Talbot School of Theology

**We transform students  
into influential Christian  
scholars and powerful  
servant-leaders.**

Gospel-fueled disciples equipped with expert knowledge of Scripture—God’s inspired Word. Confident in character, able to think theologically to apply Christian philosophy and ethics and to interpret and use Scripture. But perhaps most importantly, at Talbot, we give you every opportunity to make an even deeper connection with your faith and become a source of light. Ready to give spiritual direction and teach God’s unchanging truth to the world. | [biola.edu/talbot](https://biola.edu/talbot)



ALUMNI PROFILE



President of the Biola Accounting Society. Graduated *summa cum laude*. He was a classic overachiever when he was here. And now that he's gainfully employed at one of the top financial firms in the nation...he still is. Biola-trained, ready for any challenge, and, more importantly, eager to make a difference. Through sustainable wealth creation, by funding good, ethical ideas and by using markets to make a positive impact in people's lives.

**Kevin Vandekamp**  
Audit Associate at Deloitte & Touche  
B.S., Business Administration '15, MPAcc '16



# Calling believers with a penchant



# for the precise.

Ever heard the stories about how small accounting errors in budgets, taxes and financial reports can create huge problems for businesses? They're true. Accounting is complicated. It calls to those with a predilection for perfection. Technically savvy types with unwavering ethical standards. Sound like you? Congratulations. Accounting also happens to be one of the most stable and consistently in-demand careers. You'll be employable for life—especially if you decide to stick around for an extra year after graduation to earn your Master of Professional Accountancy. It's a worthwhile level-up that will fulfill your academic requirements to become a certified public accountant (CPA). | [biola.edu/accounting-bs](http://biola.edu/accounting-bs)



## Seeking kingdom-minded business minds.

BIOLA STARTUP COMPETITION

It takes courage to lay it all out there. To bring your raw concept for a business or a nonprofit into the light to be rated and scrutinized. But if you plan to be any kind of an entrepreneur, you better get used to it, because that's business. And that's the great thing about this competition. It prepares you for the real world. With the help of experienced executives and business leaders, you and a team will have the chance to pitch a startup concept, develop a business plan, gain valuable insights and compete for cash prizes that could help you start your startup. | [biola.edu/startup](http://biola.edu/startup)

## Crowell School of Business

**Our approach:  
start with a top-tier  
business program,  
then go further.**

Teach that business is about much more than just numbers and bottom lines. That, ultimately, it's about people. Fostering collaboration, guiding culture, championing sustainable growth and developing economies that contribute to human flourishing. Here, extraordinary and well-connected teachers will show you how to build a career on a rock-solid foundation of principles. They'll give you the tools you'll need to sharpen your business acumen to a fine point. And they'll walk alongside you as you learn to integrate your faith into everything you do. By the time you graduate, you'll be deeply, completely prepared to do business in the business world. And make a powerful impact for good—for Christ. | [biola.edu/crowell](http://biola.edu/crowell)



EIGHT WAYS TO GET DOWN TO BUSINESS

- 1 ACCOUNTING, B.S.
- 2 BUSINESS ADMINISTRATION, B.S.
  - 2.1 BUSINESS ANALYTICS
  - 2.2 FINANCIAL MANAGEMENT
  - 2.3 FINANCIAL PLANNING
  - 2.4 INTERNATIONAL BUSINESS
  - 2.5 MANAGEMENT
  - 2.6 MARKETING APPLICATION
  - 2.7 MARKETING MANAGEMENT



STUDENT SPOTLIGHT



She was accepted at numerous prestigious schools, including Cornell, but Biola was the only leading university on her list committed to keeping Christ at its core. So she came here, to study everything she's passionate about—cultures, world history and her faith—all at once. To fulfill her calling to become a missionary. And to prepare to carry God's truth and light to every tribe, every tongue and every nation she encounters.

**Mary Tatlock, '18**

*Intercultural Studies + International Development minor, Torrey Honors Student, Gates Millennium Scholar*



B.A. IN INTERCULTURAL STUDIES

**Make wherever you are your comfort zone.**

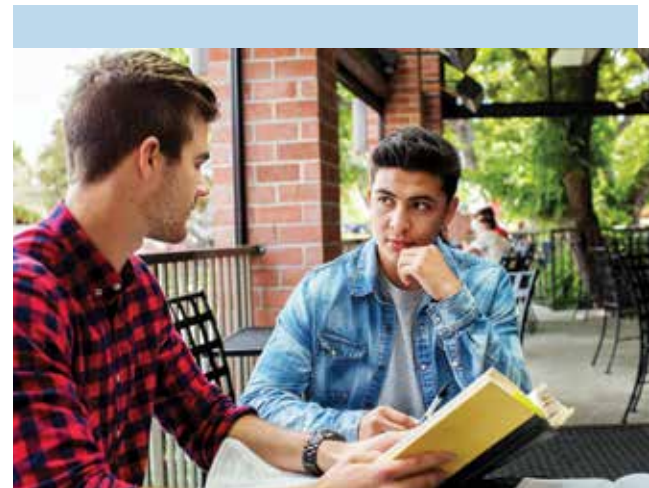
This program is about making friends with the world. Understanding it, so you can make an impact in it—for Christ. It's about going into the world and meeting people. Eating the food they eat. Listening and understanding the words they speak. Developing meaningful relationships and finding common ground. And, of course, sharing the gift of the gospel with all those you encounter along the way. When you're ready, we'll provide you with the academic tools and training you'll need to thrive in diverse, cross-cultural settings—whether you're called to international development or health care, to mission service or to teach English—wherever you go.

[biola.edu/intercultural-studies-ba](http://biola.edu/intercultural-studies-ba)

## Cook School of Intercultural Studies

**It's messy business trying to keep up with humanity these days. Every time you blink, the world gets smaller and more diverse.**

Technology and media are linking us together at lightning speed. Cultures, customs, languages, values and beliefs—past and present—all run into each other in real time. But while this new connectivity brings enormous challenges, it also presents tremendous opportunities. To lead the way forward. Become an influencer in this new reality. This is where you'll become equipped to communicate, live and work effectively in culturally diverse contexts—and in the process, make disciples of all peoples and impact the world for Christ. | [biola.edu/cook](http://biola.edu/cook)



FACULTY PROFILE

When he's not teaching students how to decode human behavior, he and a team are researching ways to measure a very Christian, yet seemingly intangible, character trait: humility. And, guess what? They've been successful. They've even developed a tool to measure it. Thanks to a grant from the John Templeton Foundation, they'll be able to take their research to the next level and use it to help businesses develop humility in their leaders. So far, the HR director at a little company called Google is interested in the idea. So, who knows, there might be others.

**Pete Hill**

*Professor of Psychology, Undergraduate Chair, Rosemead School of Psychology*



STUDENT RESEARCH OPPORTUNITIES

**Experience the experience of experience.**

After just a few years of focusing on your foundation, we'll give you a chance to dig even deeper. As a junior or senior psychology major, you can gain valuable job-related experience in an approved psychological setting or agency. Yes, while earning university credit.

## Rosemead School of Psychology

**We give you a deep understanding of you. And by "you," we mean people in general.**





At our school of psychology, accredited by the American Psychological Association, you'll learn to navigate the human mind—through one of the most holistic undergraduate psychology programs anywhere. Built on a foundation of authoritative scientific research about human behavior—integrated with a biblical understanding of human nature. You'll discover why we think the way we think and act the way we act, and how we relate to each other. And through it all, your mind and spirit will become well-prepared for the next step: graduate school and becoming an intentional, well-balanced psychology professional. | [biola.edu/rosemead](http://biola.edu/rosemead)



# Surroundings by Southern California

Located on a tree-lined, 95-acre campus in La Mirada, California. On the border between cosmopolitan Los Angeles and Orange counties, Biola is just a hop, skip or a jump away from legendary Southern California beaches and the scenic San Gabriel Mountains. Epic amusement parks and extraordinary museums. World-class concert venues that host world-class artists. Top-tier professional sports teams and amazing stadiums and arenas to see them in. And let's not forget thousands of internship and ministry opportunities.



-  194' ABOVE SEA LEVEL
-  13.85" RAIN
-  284 AVG. SUNNY DAYS
-  0" AVG. SNOWFALL



 #1 SAFEST COLLEGE CAMPUS IN CALIFORNIA  
—Niche 2017 Best College Rankings

**STUDY ABROAD**

**Change the world by letting it change you first.**

Our campus is beautiful. And the people and our culture are amazing. But this is just a tiny part of the world. If you want to understand the world—its people, its cultures and its joys and struggles—you have to get away from here. Get out there. Go into the world. Walk amongst cherry blossoms in Korea. Study social development on a banana plantation in Honduras. Or brush up on your history in England. Where do you want to go? Or rather, what part of the world do you want to let change you forever? | [biola.edu/studyabroad](http://biola.edu/studyabroad)



**BIOLA IN LONDON**

**BIOLA IN ECUADOR**

**BIOLA STUDENT EXCHANGE PROGRAM**

- Indonesia
- Japan
- South Korea

**BESTSEMESTER PROGRAMS**

- American Studies Program—Washington, D.C.
- Australia Studies Centre—Brisbane, Australia
- Contemporary Music Center—Nashville, Tenn.
- Latin American Studies Program—San José, Costa Rica
- Los Angeles Film Studies Center—Hollywood, Calif.
- Middle East Studies Program—Amman, Jordan
- Oxford Summer Programme—Oxford, England
- Scholars' Semester in Oxford—Oxford, England
- Uganda Studies Program—Monoko, Uganda

**AFFILIATED PROGRAMS**

- Au Sable Institute of Environmental Science—Michigan or Washington
- Creation Care Study Program—Belize or New Zealand
- Justice Studies in Honduras—Tegucigalpa, Honduras





# The Biola Experience



CAMPUS TRADITIONS: Catch Me If You Can • GYRAD • Midnight Madness • Mock Rock • Punk 'n' Pie



You can't help but get swept up in this place. The traditions—Mock Rock, Nationball, Flannels and Flapjacks. The welcoming environment—the beautiful grounds. And the contagious positivity of our bright-minded, vibrant community of Christian students. Each one of them enthusiastic to share their hearts, engage the world and give each other permission to exceed expectations. You don't have to see this place to believe it, but you should see it nonetheless. Because the experience of even just being here, immersed in the energy, warmth and love you'll find here, can transform you almost as much as the rigorous academics that you'll encounter. Maybe even more. | [biola.edu/culture](http://biola.edu/culture)



## CLUBS, INTRAMURAL AND CLUB SPORTS

### Who do you think you are?

College is where you discover “you.” Find out what you like. What you love. What you're good at. What you're great at. And even what you're bad at but could be good at—if you wanted to be...maybe. The point is, with active club and intramural sports programs, year-round events and more than 65 student clubs and organizations to explore, you'll never find yourself without opportunities to try something new and find “you.”

[biola.edu/clubs](http://biola.edu/clubs) | [biola.edu/sports](http://biola.edu/sports)



#### CLUB SPORTS

- Archery
- Men's Lacrosse
- Women's Lacrosse
- Rugby

#### INTRAMURAL SPORTS

- Men's Basketball
- Women's Basketball
- Dodgeball
- Men's Flag Football
- Women's Flag Football
- Sand Volleyball
- Soccer
- Softball
- Ultimate Frisbee

## STUDENT MISSIONARY UNION

### Live your part.

If you're looking forward to getting involved in any kind of ministry while you're here, this is an excellent place to start. SMU is the largest student-led missions organization in the United States and is responsible for creating and organizing some of the most memorable mission experiences students ever encounter at Biola. | [biola.edu/smu](http://biola.edu/smu)

*For almost 90 years, SMU has hosted The Missions Conference, where students are equipped and inspired to embrace their role in the completion of the Great Commission.*





# Where community



Biola students come from almost everywhere.

50 STATES  
50+ COUNTRIES

# becomes together.

In the dorms, the line between living and learning gets pretty blurry. In a good way. Because there's always so much of both happening on campus, all at once. Every day, you wake up immersed in one of the most academically challenging and spiritually enriching experiences of your life. This is where futures unfold. Lifelong friends are made. And you're always surrounded by hundreds of passionate believers.

- | APARTMENTS  | DORMS           |
|-------------|-----------------|
| Beachcomber | Alpha Hall      |
| La Mirada   | Blackstone Hall |
| Li          | Hart Hall       |
| Lido        | Hope Hall       |
| Tradewinds  | Horton Hall     |
| Tropicana   | Sigma Hall      |
| Welch       | Stewart Hall    |
|             | Thompson Hall   |



## DINING OPTIONS

### Eagle Fuel

When it's time to recharge, you'll find there's no shortage of great places to get some tasty morsels on campus. Want an all-natural beef burger with a side of trans-fat-free fries? Done. How about some scratch-made bakery items, a cup of rocket fuel and a place to kick back? We can do that. Baja tacos or a pad Thai bowl? No problemo, and ไหมมีปัญหาคา. There are eight great places where you can hang out, or hide out, and catch a bite. Each one, committed to delicious, sustainably sourced food that's good for you—and the earth.



- CAFÉ BIOLA • EAGLES' NEST • COMMON GROUNDS • BIOLA COFFEE CART • TALON GRAB 'N GO • SOARING EAGLE • HERITAGE CAFÉ • BLACKSTONE CAFÉ



## Off-campus living—on campus.

About 35% of our students live off campus. So we created **The Collegium**. A place where you can relax, study, cook, eat and really make yourself at home when you're not in class.



### NATIONBALL

We know what you're thinking. "Nationwhat?" Here's the deal. Nationball is an annual, campus-wide dodgeball tournament in which dorms and the off-campus community battle each other mercilessly to win 1,000 spirit points. What are spirit points? You'll have to come here to find out.



### THE SCORR CONFERENCE

Never heard of it? SCORR stands for Student Congress on Racial Reconciliation. It's an annual diversity conference that brings together guest artists, speakers and performers, and hundreds of students from across the country. And it all began right here at Biola more than 20 years ago. With the specific purpose of developing a greater vision for increasing diversity on Christian college campuses. Celebrating the beauty of our differences. And bravely engaging the challenges they present.



# We only play








# one way:

# All in.



## A home for every sport.

We believe in getting behind our athletes. Whether they're walking, running, swimming, kicking, swinging, spiking, acing or dunking. We make sure they always have the highest-quality facilities to play in and an enthusiastic crowd to cheer them on.

-   
**CHASE GYMNASIUM**
-   
**AL BARBOUR FIELD**
-   
**EAGLES DIAMOND**
-   
**FREEDOM FIELD**
-   
**LANSING AQUATIC CENTER**
-   
**BIOLA TENNIS CENTER**
-   
**FITNESS CENTER AND WEIGHT ROOM**

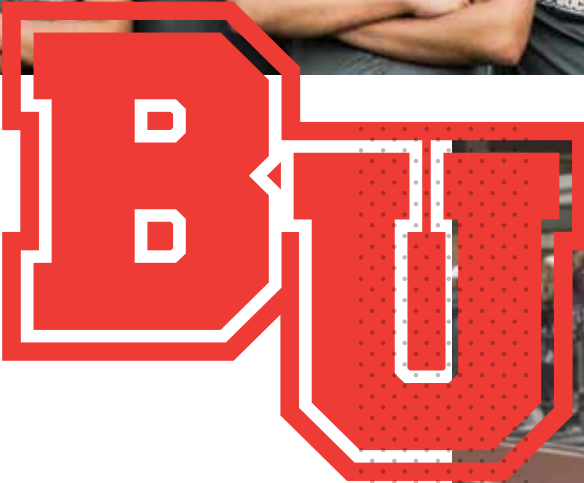


- MEN'S**
- Baseball
  - Basketball
  - Cross Country
  - Soccer
  - Swimming & Diving
  - Tennis
  - Track & Field

- WOMEN'S**
- Basketball
  - Cross Country
  - Golf
  - Soccer
  - Softball
  - Swimming & Diving
  - Tennis
  - Track & Field
  - Volleyball

**EAGLES ON THE RISE**

**We've joined NCAA Division II.** We have a long history of developing exceptional student athletes and teams at the NAIA level—winning nine Golden State Athletics Conference (GSAC) Championships over the past few seasons alone. But it was time for us to make a move—up to NCAA Division II, and join the PacWest Conference. Division II is composed of more than 300 colleges and universities that take a balanced approach to fostering academia and sports excellence. It's an extraordinary opportunity for us to take Biola sports to the next level. And it will increase the chance that our student athletes and teams will get some national exposure on TV and through live-streamed games. | [athletics.biola.edu](http://athletics.biola.edu)



**@BiolaAthletics**





AMERICA'S

# TOP 10

“UP AND COMING”

NATIONAL UNIVERSITIES

—U.S. News & World Report, 2015

# “BEST WESTERN” UNIVERSITY

—Princeton Review

# 1 OF SEVEN FAITH-BASED SCHOOLS WORTH ATTENDING

—Former United States Secretary of Education William J. Bennett, *Is College Worth It?*, 2013

 TOP COMPANIES HIRING GRADUATES

APPLE

KAISER PERMANENTE

DISNEYLAND RESORT

LOS ANGELES UNIFIED SCHOOL DISTRICT

SADDLEBACK CHURCH

BOEING

LIFERAY, INC

THE WALT DISNEY COMPANY

CALIFORNIA STATE UNIVERSITY, FULLERTON

NORTHROP GRUMMAN



**CAREER EXPOS**

Each year, dozens of high-caliber employers connect with Biola students at two tailored career fairs on campus. Our fall fair brings media, technology and business-services companies right to you, and our spring fair hosts companies seeking those looking for social-impact jobs or internships.

**Financial Aid**

College is a big investment. Most Biola students—more than 90%—rely on one or more forms of financial assistance. Explore our financial aid section online for important details, helpful calculators and the most up-to-date list of scholarship, grant and loan options available. | [biola.edu/undergrad/financial-aid](http://biola.edu/undergrad/financial-aid)

SCHOLARSHIP	ELIGIBILITY	AWARD
Freshman Academic Scholarship	Based on unweighted final high school GPA and SAT or ACT. Calculate your scholarship at <a href="http://biola.edu/calculate">biola.edu/calculate</a> .	\$4,000 to \$18,000
Transfer Heritage Academic Scholarship	Based on transfer with 15+ credits and college transcript. 14 credits or less: eligible for traditional academic scholarship based on high school transcript.	\$6,000 to \$12,000
Alumni Dependent Scholarship	Based on dependents of those with 30 credits of coursework completed at Biola University.	\$1,000
Church Matching Scholarship	Based on half-time student receiving financial sponsorship from a church, and need.	Up to \$1,300

**ANNUAL COST OF ATTENDANCE**

Visit us online to see the most up-to-date tuition and expenses details, housing options and meal plans. | [biola.edu/coa](http://biola.edu/coa)

**Support Services**

You have questions? We have answers. Feel free to reach out to the dedicated staff at any of our support offices or centers. They're ready to help set you up for success.



**OFFICE OF ACADEMIC ADVISING**

Need some assistance with registration or transferring credits? Have some questions as a FirstGen student or an athlete? This is a good place to start looking for answers to most of your administrative questions. [biola.edu/academic-advising](http://biola.edu/academic-advising)



**WRITING CENTER**

This is where students of all disciplines and abilities come to strengthen their writing skills. Because, in a world full of mediocre writers, good ones stand out—and succeed. | [biola.edu/writing-center](http://biola.edu/writing-center)



**OFFICE OF CAREER DEVELOPMENT**

Our team is here to help you prepare for the job market or graduate school. And show you how to use key resources like Handshake to network, create dynamic resumes and cover letters, and find jobs or internships. | [biola.edu/career-development](http://biola.edu/career-development)



**VETERANS SERVICES**

We are an approved Title 38 degree-granting institution for veterans. A Yellow Ribbon School. And we're fully equipped and committed to helping veterans as they achieve academic success. | [biola.edu/veterans-services](http://biola.edu/veterans-services)



**LEARNING CENTER**

Remember, you never have to struggle alone. This center exists to provide you with the assistance you need to achieve and maintain an adequate level of academic proficiency. If you need help, just ask. [biola.edu/learning-center](http://biola.edu/learning-center)



**DISABILITY SERVICES**

We're dedicated to providing reasonable and appropriate accommodations to students with psychological, medical, physical and learning disabilities, and to ensuring legal compliance with state and federal disability law. [biola.edu/disability-services](http://biola.edu/disability-services)





# Time to apply yourself.

Right now. This is one of those times where things start to fall into place. And it all starts with you making a move—a courageous, life-altering decision to become a part of the next class of extraordinary, intentional, brilliant Biola students. Ready to take hold of your calling and get on the path to discovering the greatest version of you. Don't worry, you don't need to go it alone. An entire all-Christian community will be exploring, researching, seeking and finding answers right alongside you. Every step of the way. Helping you find your way while you receive one of the finest faith-integrated educations on earth. | [biola.edu/apply](https://biola.edu/apply)



### APPLICATION DEADLINES

All materials must be received in the Admissions Office by the appropriate deadline date.

#### FALL SEMESTER

Early Action 1	Nov. 15
Early Action 2	Jan. 15
Regular	Mar. 1

#### SPRING SEMESTER

Regular	Nov. 15
---------	---------

### FIRSTGEN SCHOLARS PROGRAM

## Committed to every generation. Including the first.

We know—being the first in your family to go to college can be overwhelming. That's why we do everything we can to make your transition to Biola as comfortable and rewarding as possible through our FirstGen Scholars Program. If selected, you'll receive a \$2,500 scholarship and the opportunity to participate in a program designed to help you adjust to college life. With a summer bridge program, priority access to a first-gen living-learning community in the dorms (if you plan to live on campus), your own peer and faculty mentors, and much more. | [biola.edu/firstgen-scholars](https://biola.edu/firstgen-scholars)



## Admissions Checklist

- Complete and submit your official application for admission.**  
Every advantage goes to the early applicant!
- Submit a nonrefundable \$45 application fee.\***  
If applying online, you may submit the fee at the same time; otherwise, please send a check or money order made payable to **Biola University**, with the student's name indicated on the memo line, to the Office of Admissions.  
\*Biola will accept the College Board or ACT fee waiver.
- Complete the required essay.**  
Applications will not be reviewed until your essay has been submitted.
- Submit official transcripts.**  
Transcripts will be considered official only when sent directly from the institution to our Office of Admissions.  
**First-time college students:** Submit transcripts from each high school attended, current through the time of application. Final official transcripts must be submitted upon completion of course of study and must include graduation date.  
**Transfer students:** Submit transcripts from each high school and each college attended.  
**Homeschool students and international students:** Visit [biola.edu/apply](https://biola.edu/apply) for special instructions.
- Submit your scores from the SAT (Code 4017) or ACT (Code 0172).**  
The SAT or ACT is required of all applicants unless you are transferring from another school with more than 15 transferable units post-high school.
- Submit Your Application**  
Make sure you send your information to us on time.

### EXPLORE BIOLA

## Visit. Apply. Become what you believe.

There's nothing quite like being here. Engaged with this vibrant community of bright believers. Immersed in the tranquil beauty of the grounds. You'll see. Explore a full range of tour options online—and then visit. Stop by our brand-new Welcome Center in Metzger Hall when you arrive and then get ready to be impressed. | [biola.edu/visit-events](https://biola.edu/visit-events)



### UNIVERSITY DAY

An overnighter. Two days of campus tours and class visits, faculty and staff meetings, chapel and info sessions, and counselor appointments.

HIGH SCHOOL JUNIORS AND SENIORS, TRANSFER AND INTERNATIONAL STUDENTS | Fall

### BIOLA BOUND

Not from Southern California? This event is designed with you in mind. The four-day visit includes a campus tour, classes, chapel, dinner, a trip to Disneyland and a visit to a local church.

STUDENTS FROM OUTSIDE OF SOUTHERN CALIFORNIA | Fall and Spring

### SPRING PREVIEW DAY

Pack your bags for a couple of event-packed days filled with tours, faculty and staff meet-and-greets, counselor appointments, chapel, info sessions and more.

HIGH SCHOOL JUNIORS AND SENIORS, TRANSFER AND INTERNATIONAL STUDENTS | Spring



### PERSONALIZED TOURS

Interested in arranging a tailor-made personal tour that includes appointments with key faculty and coaches? That can be arranged. We can also accommodate custom group tours. Start planning your visit today.

[biola.edu/custom-visit](https://biola.edu/custom-visit)  
1-800-652-4652 (OK-BIOLA)





# BIOLA

UNIVERSITY

13800 Biola Ave  
La Mirada, CA 90639

562-903-6000 | 1-800-652-4652

[biola.edu](http://biola.edu)

*Biola University is committed to providing a learning and living environment that promotes safety, transparency, personal integrity, civility, mutual respect and freedom from discrimination. As a Christian university controlled by its Board of Trustees, Biola has requested and received a regulatory exemption under Title IX, 34 C.F.R., section 106.12, and is also exempted from provisions of California Education Code 66270 to the extent that the application of such laws is not consistent with the institution's religious tenets. These exemptions may apply to, but are not limited to, requirements as expressed in university policies including the following: student community standards, housing policies, admissions processes and employee standards of conduct. Biola retains all rights afforded under federal law and the laws of the State of California.*