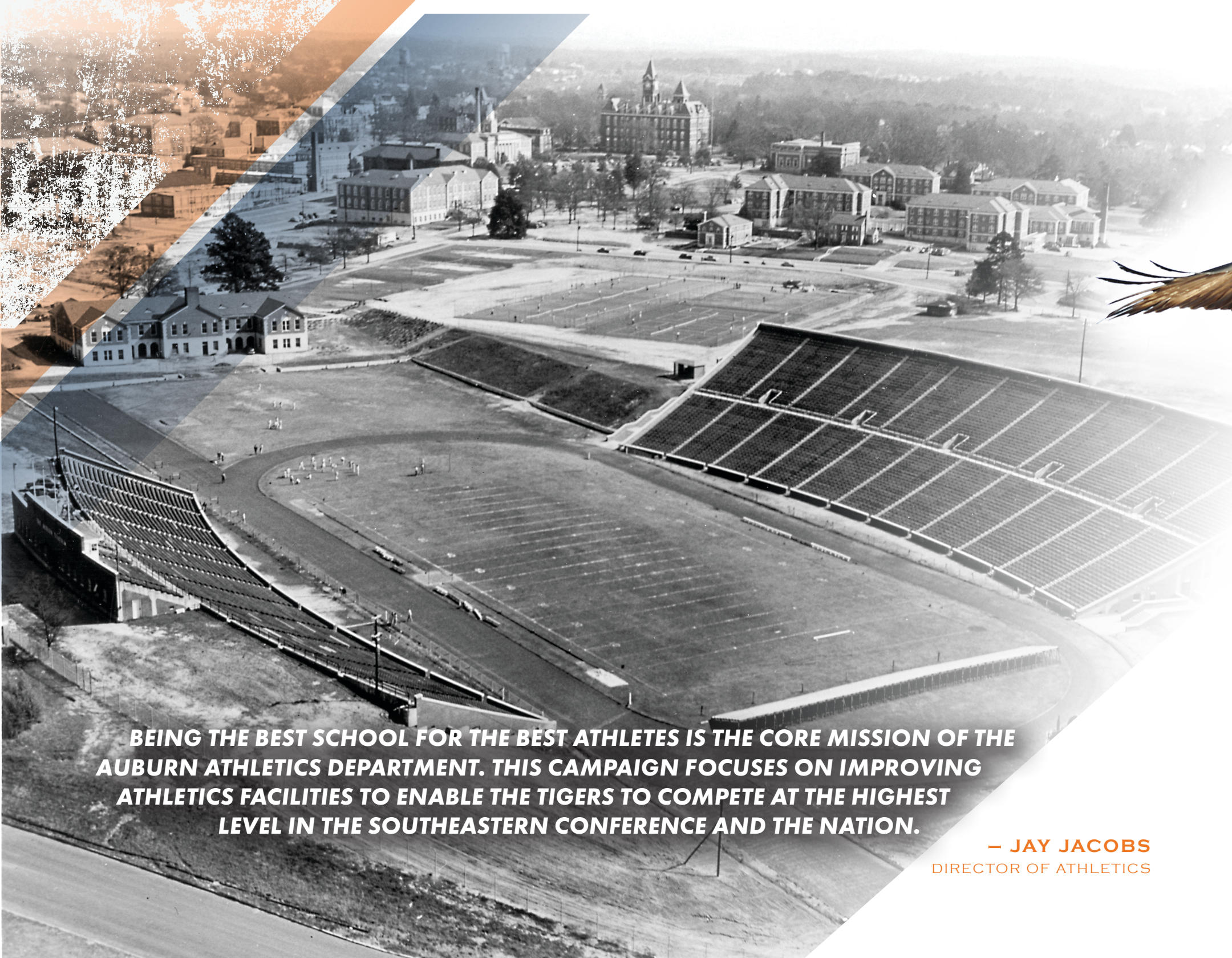


FEARLESS AND TRUE

A FACILITIES CAMPAIGN FOR AUBURN ATHLETICS





BEING THE BEST SCHOOL FOR THE BEST ATHLETES IS THE CORE MISSION OF THE AUBURN ATHLETICS DEPARTMENT. THIS CAMPAIGN FOCUSES ON IMPROVING ATHLETICS FACILITIES TO ENABLE THE TIGERS TO COMPETE AT THE HIGHEST LEVEL IN THE SOUTHEASTERN CONFERENCE AND THE NATION.

— JAY JACOBS
DIRECTOR OF ATHLETICS



FEARLESS

AND

TRUE:

It is the familiar refrain of our beloved fight song that resonates with thousands of Auburn faithful. It also is a fitting way to describe the hundreds of student-athletes who choose to continue their athletics careers as part of the Auburn Family. For endless hours, they train and practice, perfecting their skills until it is time to wear the orange and blue uniform and compete on behalf of our university.

It also is the hallmark of Auburn's fans — fearless in their devotion to the university and team they love; ever faithful with a hearty "War Eagle!"

Since Auburn University first fielded a football team in 1892, athletics have been an integral part of Auburn University. Much of our institution's rich history and tradition is tied to a legendary game or athletics event. We continue to build on this foundation that was laid 125 years ago, working to provide our student-athletes and fans with the preeminent athletics

experience, because we know that investments in our student-athletes, our coaches, our facilities, and our game day experience are critical to our success.

As we embark on this historic campaign to enhance Auburn's athletics facilities, we invite you to join us as we build on our past to boldly prepare for the future. Together, we can achieve our goal of \$61.7 million and create for our student-athletes, coaches, staff, and fans the best venues in which to train and compete. Together, we will be Fearless and True.



TRE' WILLIAMS

SENIOR, COLLEGE OF LIBERAL ARTS

RECRUITING IS THE LIFEBLOOD of any football program. Hundreds of recruits and their families attend our home football games. For them, an autumn Saturday in Auburn is like being a VIP at the ultimate family reunion. That is why we are investing in major improvements to the locker room and recruiting space at Jordan-Hare Stadium. After an extensive planning process, head football coach Gus Malzahn and Auburn Athletics determined critical needs included improving the locker room for our current players and expanding and enhancing the recruiting space for football and Olympic sports. Thanks to the support of the Auburn Board of Trustees, work has begun on the first phase of our plan.

Construction is underway on the new Harbert Family Recruiting Center, a game day support and recruiting facility that will be built in the southwest corner of Jordan-Hare Stadium. This five-level, 44,000-square-foot facility will include exceptional recruiting space for football and Olympic sports, a new club space for fans, and a new press box for media. The Harbert Family Recruiting Center will be the new gold standard in college athletics recruiting.

Also included in the redevelopment are expanded and renovated locker rooms and plans to reimagine the current press box area to create a new premium seating experience for Auburn football's most loyal donors on the stadium's west side. Known as the Founder's Club, this luxury area will offer the highest level of service within an upscale atmosphere and includes a spectacular view of the 50-yard line.

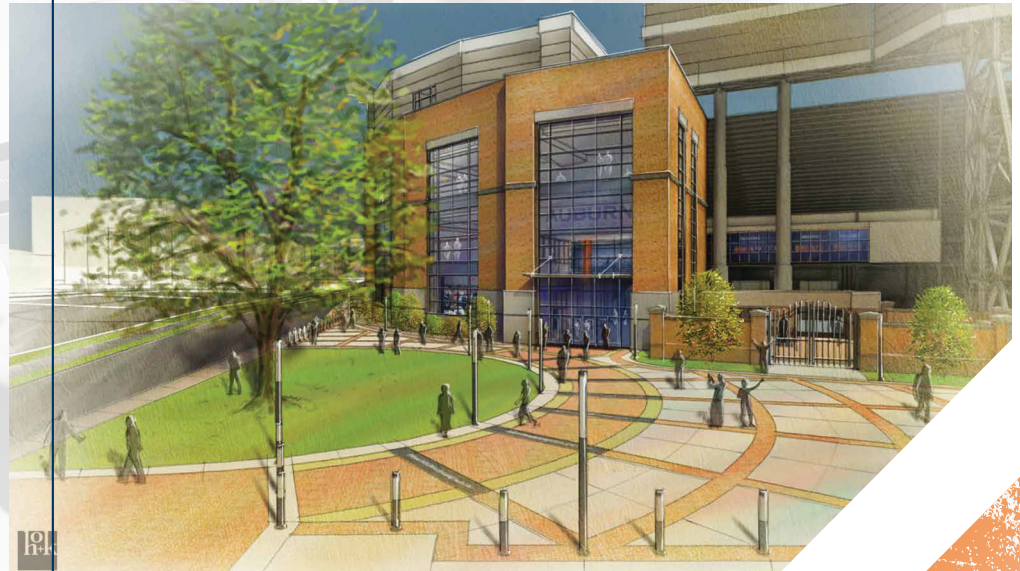
JORDAN-HARE STADIUM

CAMPAIGN GOAL

\$31.4 MILLION

TOTAL PROJECT

\$40 MILLION





ANDREW CRANE

ASSISTANT ATHLETIC TRAINER, FOOTBALL

AUBURN ATHLETICS is committed to providing comprehensive, high-quality medical services to every student-athlete. A new state-of-the-art Sports Medicine Facility will provide premium sports medicine care to Auburn student-athletes, coaches, staff, the campus, and the community while enhancing Auburn's reputation of providing an exceptional experience for its student-athletes. The new facility will provide the highest level of care in prevention, evaluation, and treatment of injuries and illnesses, rehabilitation services, pre-participation exams, nutritional counseling, psychological counseling, and substance abuse education and counseling.

The facility will include a training room, a rehabilitation area with therapy pools and a sport court, office space for primary care physicians, areas for specialized research, a nutrition fueling station, sports psychology and counseling offices, and other support areas for Sports Medicine.

Student-athletes currently receive rehabilitation and pre-practice preparation in the coliseum, which is not a suitable space for adequate training and rehab. The new facility will replace the coliseum training room and, at more than 30,000 square feet, it will be one of the largest Sports Medicine facilities in the country.

The building will house the necessary functions to accommodate all of Auburn's student-athletes, making it the first sports medicine facility of its kind in the Southeastern Conference.

SPORTS MEDICINE FACILITY

CAMPAIGN GOAL

\$12.7 MILLION

TOTAL PROJECT

\$25 MILLION





KASEY COOPER

SENIOR, SAMUEL GINN COLLEGE OF ENGINEERING

THE AUBURN SOFTBALL PROGRAM has been on the rise since the arrival of head coach Clint Myers in 2013; however, Jane B. Moore Field remains one of the smaller softball facilities in the SEC. This has led Auburn Athletics to develop plans to improve player training spaces and enlarge and enhance Jane B. Moore Field. A player development facility will provide the team with a practice infield and indoor batting cages. Although currently there are covered batting cages at the field, they are not enclosed and the team is unable to use them during inclement weather. Myers lists a new player development center as his highest priority.

Season tickets for softball sell out quickly and there is not enough seating to meet fan demand. Jane B. Moore Field currently has seating for 1,100 fans, plus temporary bleacher seats for more than 800 fans. Portable restrooms have been added and a portion of the press box was renovated to provide more space for concessions. Increasing the seating capacity by building more permanent seating, restrooms, and concession areas will improve the fan experience for Auburn softball. There also are plans to enlarge the press box to better accommodate the needs of the SEC Television Network, as well as other media, and make game management operations more efficient. Increasing the press box area also will provide an opportunity to include some club space for softball's most loyal donors. These renovations and facility enhancements will provide an exceptional fan and student-athlete experience and will allow Jane B. Moore Field to become the preeminent softball facility in the SEC and the nation.

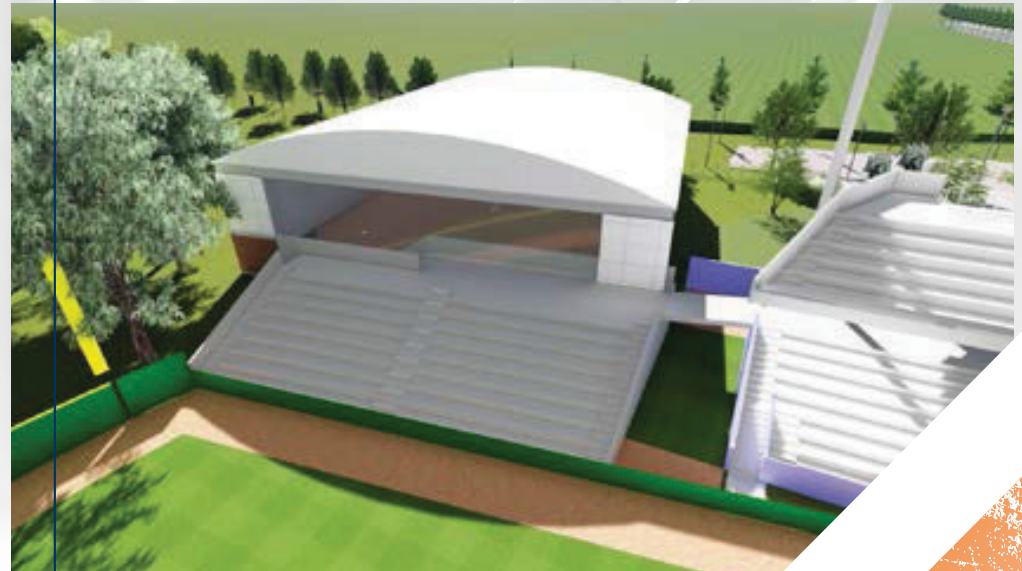
JANE B. MOORE SOFTBALL FACILITY

CAMPAIGN GOAL

\$4.8 MILLION

TOTAL PROJECT

\$12 MILLION





CASEY MIZE

SOPHOMORE, UNIVERSITY COLLEGE

PLAINSMAN PARK once was recognized as one of the nation's top collegiate baseball facilities. Although the charm of the park has remained, opportunities for player development lag behind our peers. Auburn Baseball Coach Butch Thompson has named a new Player Development Center as his top priority to help enhance player performance. The Player Development Center will include four indoor batting cages, two pitching mounds, a pitching and hitting analytics lab, a fitness room, team meeting space, visitor/professional player locker room, and an umpire locker room. Slated to be built just beyond right field at Plainsman Park, the center will be close to the Wellness Kitchen, residence halls, the Athletics Complex, and the Charlotte G. Lowder Student Athlete Development Center.

Building the facility in right field provides the opportunity to create a new game day viewing experience for Auburn baseball. The center will include a covered pavilion that overlooks the field and provides fans a covered space from which to watch the game, fellowship with friends, and enjoy food and beverages.

In addition to the Player Development Center, Auburn Athletics has plans to expand the covered seating areas inside Plainsman Park. This upgrade enhances the fan experience as it provides additional shaded seating down the first base and third base lines. There also are plans to enlarge the press box, which is needed to accommodate expanded coverage from the SEC Television Network and other media outlets. This expansion also provides the opportunity to add club space with new amenities for Auburn baseball's most loyal supporters.

PLAINSMAN PARK

CAMPAIGN GOAL
\$4.8 MILLION

TOTAL PROJECT
\$8 MILLION





2016 NOEA CHAMPS
2016 NOEA CHAMPS
2016 NOEA CHAMPS

2016 NOEA CHAMPS



MARGARET HURT

JUNIOR, COLLEGE OF LIBERAL ARTS

THE EQUESTRIAN TEAM, which includes both Western and Hunt Seat, has won four National Collegiate Equestrian Association championships since the team began at Auburn in 2002. However, Auburn's equestrian facility has not received any notable renovations that directly impact student-athletes since the team's first year. Other comparable equestrian programs have upgraded facilities or are in the process of upgrading their facilities to support this competitive sport, and Auburn Athletics and head coach Greg Williams hope to do the same. Plans are underway to construct two new facilities at the Auburn University Horse Center: a barn and an equestrian support facility.

The barn will include more than 20 stalls, a tack and team room, a nutrition center, equipment storage, a laundry area, and a media room to help support the care of our equine athletes. The equestrian support facility will include restrooms, Auburn team locker room, multi-purpose classroom/team room space, and a training room that will accommodate the various needs of the student-athletes, staff, coaches, and visitors to the equestrian facility.

EQUESTRIAN **SUPPORT FACILITY**

CAMPAIGN GOAL
\$5 MILLION

TOTAL PROJECT
\$5 MILLION



EQUESTRIAN



COACH PEARL
500
WINS



AUBURN
5

500
WINS

AUBURN ATHLETICS plans to expand and upgrade the existing men's basketball locker room and team support areas to provide a premium experience for student-athletes, coaches, and staff. Head men's basketball coach Bruce Pearl explained the enhanced areas will equip the men's basketball program with the necessary facilities to help take the program to a championship level and will strengthen recruiting of prospective student-athletes.

The expanded men's locker room, located adjacent to the current locker room, will feature new updated lockers, and new amenities will be added to an expanded player's lounge. In addition, the player's lounge, locker room, team meeting room, and training area will be enhanced by the installation of new graphics for current players as well as recruits.

MEN'S BASKETBALL LOCKER ROOM EXPANSION

CAMPAIGN GOAL
\$3 MILLION

TOTAL PROJECT
\$3 MILLION



MUSTAPHA HERON

FRESHMAN, COLLEGE OF LIBERAL ARTS

CAMPAIGN GOALS

Jordan-Hare Stadium Harbert Family Recruiting Center, Locker Room Renovations, and Founder's Club	\$31.4 MILLION
Sports Medicine Facility	\$12.7 MILLION
Jane B. Moore Softball Facility Improvements	\$4.8 MILLION
Plainsman Park Improvements	\$4.8 MILLION
Equestrian Support Facility	\$5 MILLION
Men's Basketball Locker Room Expansion	\$3 MILLION
TOTAL	\$61.7 MILLION

CAMPAIGN LEADERSHIP

MAC CRAWFORD, CO-CHAIR

BENNIE BRAY, CO-CHAIR

TIGERS UNLIMITED BOARD:

MAC CRAWFORD, PRESIDENT

BABS ANDERSON

CHARLES BARKLEY

BENNIE BRAY

TIM HUDSON

GAINES LANIER

BOBBY LOWDER

MIKE MCCARTNEY, EMERITUS

EARLON MCWHORTER

JOEY PIERSON

KENDALL SIMMONS

